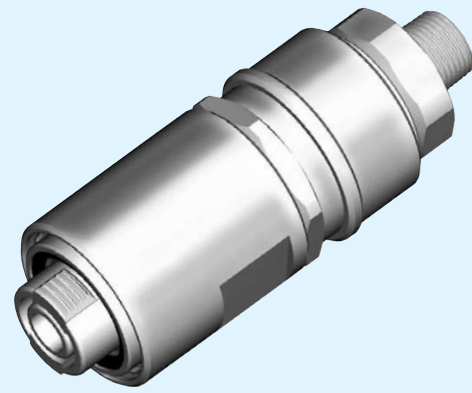
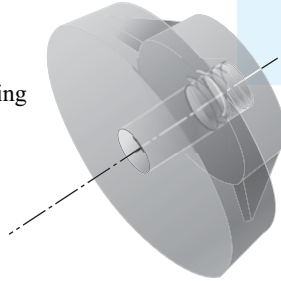


Female Screw Cupla PCSI Type

Direct, one-touch connection with female screws greatly improves workability!

- For direct one-touch connection with female screws.
- Connection to female screws is easy by simply pressing the back side of the Cupla. This design ensures that its locking claw securely grips the screw threads at the time of connection.
- Structure uses internal pressure to maintain packing in the entire surface of the screw.
- Alleviates troublesome tightening work thereby greatly shortening pipe laying work.



■ Usage

- Filling Work
- Pressure Tests
- Leak Tests

For Inner Diameter Tip Work

Pipe Cupla PCBI Type

Employs a ball to lock the leading end in the inner diameter of the work. Greatly improves workability!

- For direct one-touch connection to the inner diameter of work
- Presses into the inner diameter of the work to connect. Connection is easy by simply pressing the back side of the Cupla. Employs an inner ball locking system that securely fastens the balls to the leading end in the inner diameter of the work at the time of connection.
- Structure uses internal pressure to increase the seal with the work.
- Alleviates troublesome pipe laying work thereby greatly shortening working hours.

■ Usage

- Filling Work
- Pressure Tests
- Leak Tests

