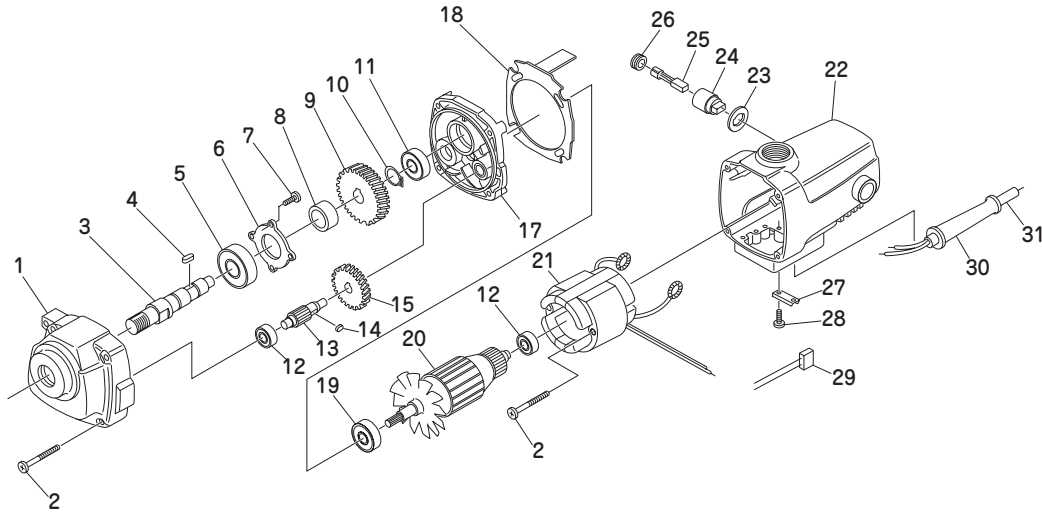


10 ATRA ACE UO-3500 MOTOR ASSEMBLY AND PARTS LIST

⚠ WARNING

This diagram is for reference only. Do not attempt to service or repair the Nitto Portable Magnetic Drilling Machine. Do not take the machine apart. Contact an authorized Nitto dealer for all service and repair of the machine. Improper service and repair can cause accidents and severe injuries. Never attempt to modify the machine. Never attempt to service or repair the machine yourself.



No.	Part No.	Part Name	Q'ty	Price
1	TQ07142	Gear Case	1	
2	TQ01856	Pan Hd. Screw 5X50	4	
3	TQ07144	Spindle	1	
4	TP16497	Key 5X5X7	1	
5	TP01632	Ball Bearing 6203Z	1	
6	TQ00858	Bearing supporter	1	
7	TP11492	Pan Hd. Screw 5X10	4	
8	TQ00860	Collar	1	
9	TQ07145	Helical Gear B	1	
10	CP04989	External Retaining Ring C15	1	
11	TP06626	Ball Bearing 6200	1	
12	TP00468	Ball Bearing 608ZZ	1	
13	TQ07146	Pinion Gear	1	
14	TQ03980	Key 3X3X5	1	
15	TQ07147	Helical Gear A	1	

No.	Part No.	Part Name	Q'ty	Price
17	TB05499	Bearing Bracket Ass'y	1set	
18	TQ01436	Fan Guide	1	
19	TQ07149	Ball Bearing 6200DDU	1	
20	TB05498	Armature Ass'y (115V)	1set	
21	TB01012	Stator Ass'y (115V)	1set	
22	TQ00870	Motor Housing	1	
23	TQ00869	Insulating Washer	2	
24	TQ00868	Brush Holder	1	
25	TB00598	Carbon Brush Ass'y	1set	
26	TQ00867	Brush Cap	1	
27	TP13362	Cord Holder	1	
28	LP30251	Pan Hd. Screw 4X16	1	
29	TP16481	Condenser	1	
30	TPP13363	Strain Reliever	1	
31	TQ07150	Connecting Cable	1	