

# HS06-1322



Allowable Max. Pressure

**82,560 lbs (41ton)**

Max. Punching Thickness: 1/2"

(A36)

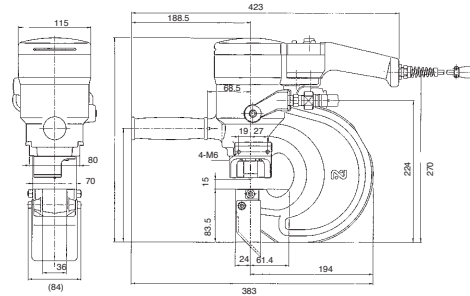
Max. Punching Diameter: 7/8"

MODEL

# HS06-1322

## Specifications

<b>Model</b>	HS06-1322	
<b>Max. Throat Depth</b>	inch (mm)	2-3/8" (60)
<b>Punching capacity</b>	inch (mm)	<b>Max. Punching Diameter</b> <b>Max. Punching Thickness</b>
Mild Steel A36		7/8" (22)   1/2" (13)
Stainless Steel 304		7/8" (22)   1/4" (6)
<b>Hole Making Time</b>	Punching Time 7.9 sec. Returning Time 3.4 sec.	
<b>Allowable Max. Pressure</b>	10.000 psi (700 kgf/cm <sup>2</sup> )	
<b>Max. Output</b>	lbs (ton)	82,650 (41)
<b>Ram Stroke</b>	inch (mm)	13/16" (21)
<b>Mass (Weight)</b>	lbs (kg)	45 (20.5)



## Standard Accessories for HS06-1322

- Hose kit assembly
- Hose cord assembly
- Sub handle assembly
- Tool box
- 4 mm Allen wrench
- #12 Spanner wrench
- 22 mm "D" series punch & die
- Chip guard assembly
- Spanner