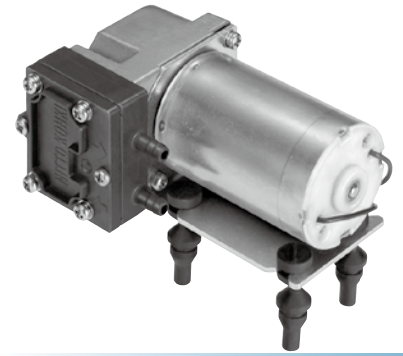


Compressor and Vacuum Pump

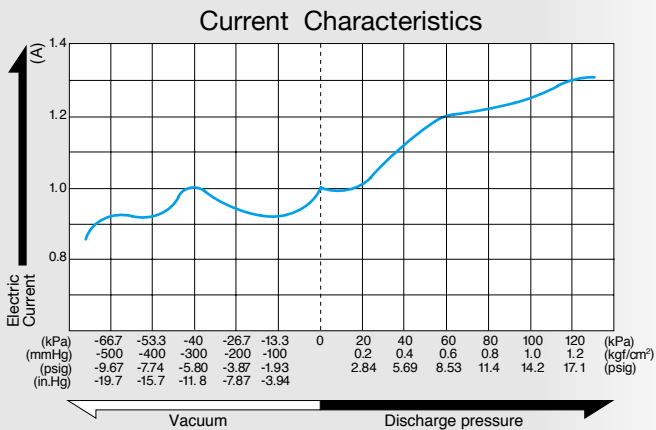
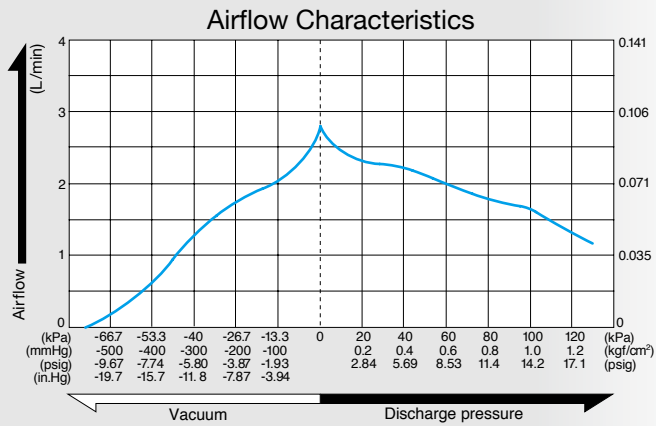


Model DP0105-X1

Brush DC Motor 12 V DC



Airflow & Power Consumption

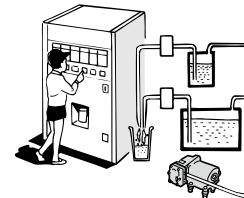


Specifications

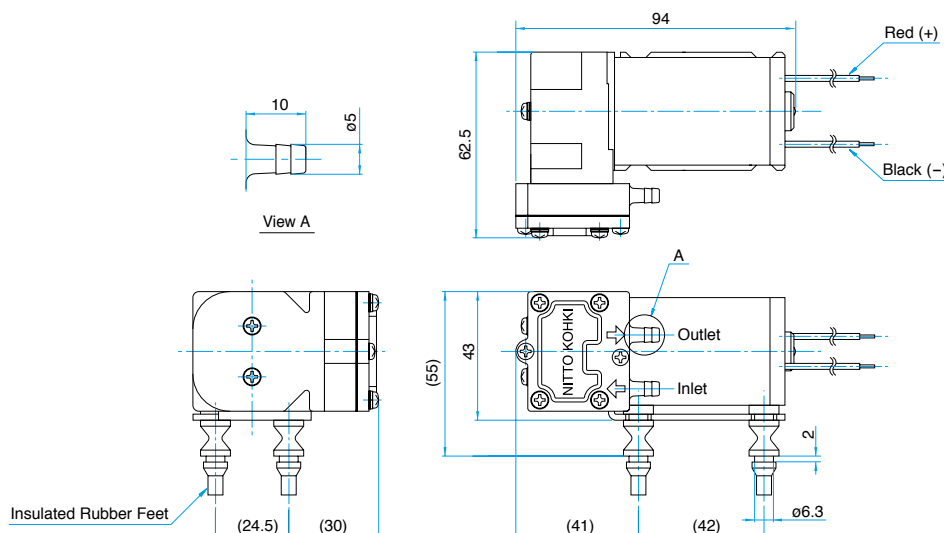
Attainable Vacuum	-66.7 kPa (-500 mmHg) -667 mbar -19.7 in.Hg
Free Air Displacement	2.8 L/min 0.099 cfm
Rated Voltage	12 V DC
Maximum Pressure	250 kPa (2.5 kgf/cm ²) 2.5 bar 35.6 psig
Maximum Current	1.9 A
Duty Cycle	30 minutes
Working Pressure Range	-66.7 to 100 kPa (-500 mmHg to 1 kgf/cm ²) -667 mbar to 1 bar -19.7 in.Hg to 14.2 psig
Rated Performance (MTTF)	2,000 hours
Inlet	5 mm O.D. straight barb
Outlet	5 mm O.D. straight barb
Coil Insulation Class	E or its equivalent
Mounting Dimensions	42 (L) x 24.5 (W) mm 1 - 21/32" (L) x 1 - 31/32" (W)
Weight	0.36 kg 0.79 Lbs
Leadwire Length	360 mm 14 - 11/64"

Application Examples

Vending Machines



External Dimensions (Unit: mm)

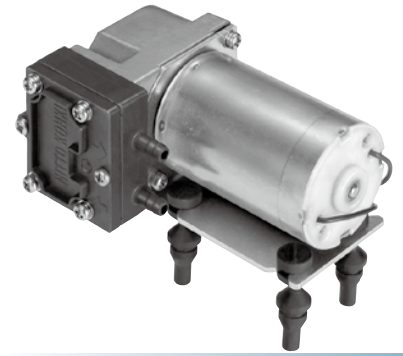


Compressor and Vacuum Pump

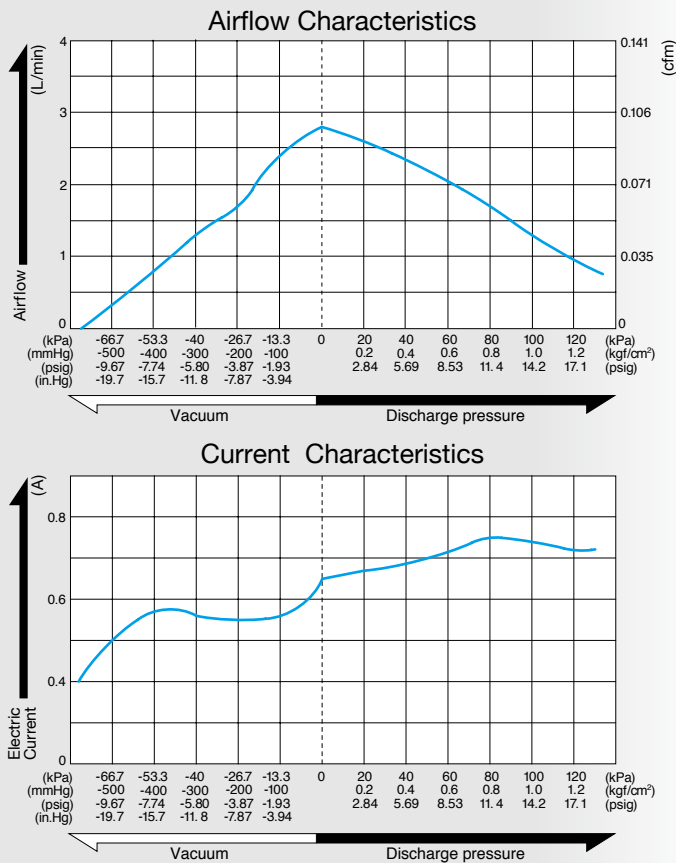
Model **DP0105-Y1**



Brush DC Motor **24 V DC**



Airflow & Power Consumption

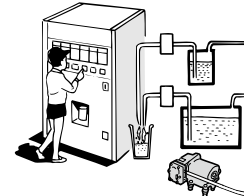


Specifications

Attainable Vacuum	-66.7 kPa (-500 mmHg) -667 mbar -19.7 in.Hg
Free Air Displacement	2.8 L/min 0.099 cfm
Rated Voltage	24 V DC
Maximum Pressure	250 kPa (2.5 kgf/cm ²) 2.5 bar 35.6 psig
Maximum Current	0.95 A
Duty Cycle	30 minutes
Working Pressure Range	-66.7 to 100 kPa (-500 mmHg to 1 kgf/cm ²) -667 mbar to 1 bar -19.7 in.Hg to 14.2 psig
Rated Performance (MTTF)	2,000 hours
Inlet	5 mm O.D. straight barb
Outlet	5 mm O.D. straight barb
Coil Insulation Class	E or its equivalent
Mounting Dimensions	42 (L) x 24.5 (W) mm 1 - 21/32" (L) x 1 - 31/32" (W)
Weight	0.36 kg 0.79 Lbs
Leadwire Length	360 mm 14 - 11/64"

Application Examples

Vending Machines



External Dimensions (Unit: mm)

