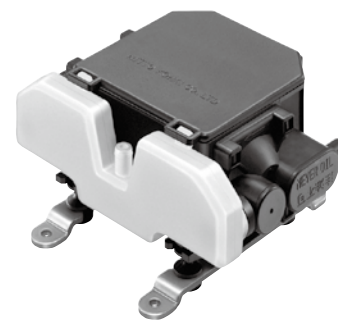


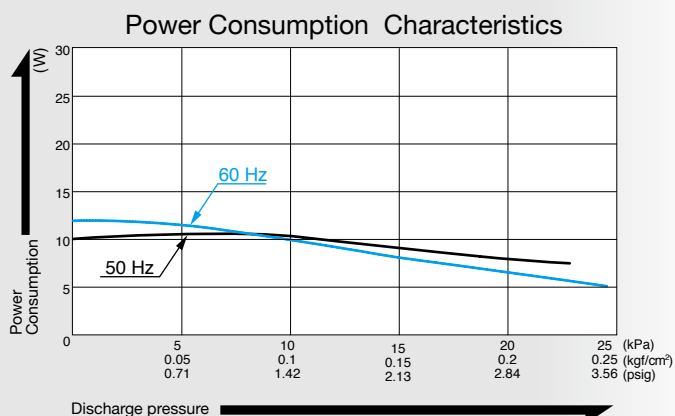
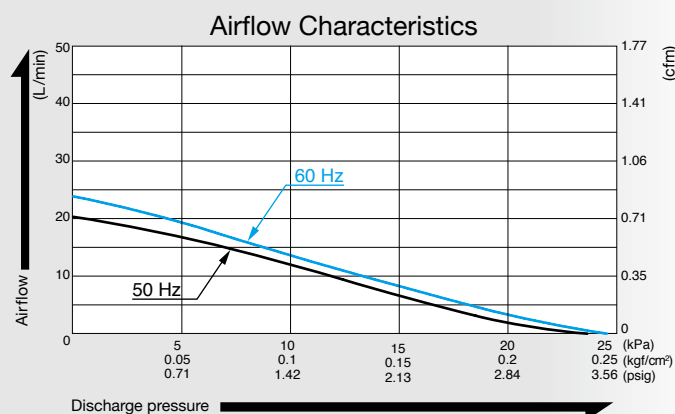
Compressor

Model VC0101

Blower Type



Airflow & Power Consumption

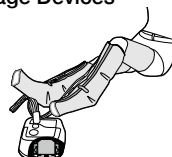


Specifications

Rated Pressure	10 kPa (0.1 kgf/cm ²) 0.1 bar 1.42 psig	
Rated Airflow	10 L/min 0.35 cfm	
Maximum Pressure	20 kPa (0.2 kgf/cm ²) 0.2 bar 2.84 psig	
Rated Voltage	120 V AC	230 V AC
Power Consumption	11 W	
Rated Frequency	60 Hz	50 Hz
Rated Performance	10,000 hours	
Working Pressure Range	0 to 20 kPa (0 to 0.2 kgf/cm ²) 0 to 0.2 bar 0 to 2.84 psig	
Outlet	7.5 mm O.D. hose barb	
Duty Cycle	Continuous	
Coil Insulation Class	A for 120 V or its equivalent	E for 230 V or its equivalent
Mounting Dimensions	66 (L) x 100 (W) mm 2 - 19/32" (L) x 3 - 15/16" (W)	
Weight	0.82 kg 1.81 Lbs	
Leadwire Length	300 mm 7 - 7/8"	

Application Examples

Massage Devices



Bedsore Prevention Mattress



External Dimensions (Unit: mm)

