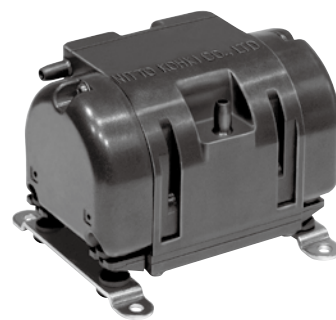


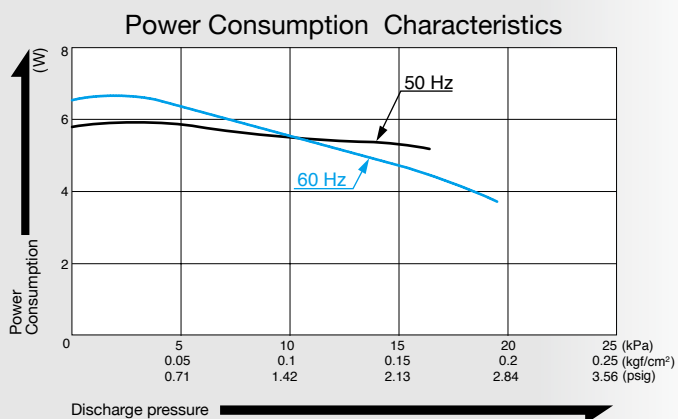
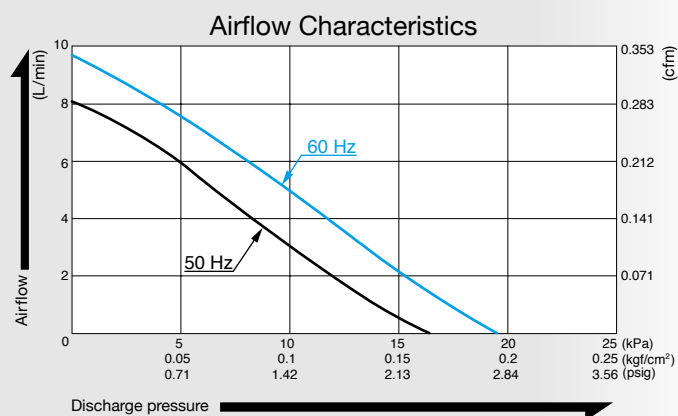
# Compressor

## Model VC0100

Blower Type



### Airflow & Power Consumption

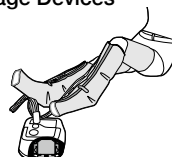


### Specifications

Rated Pressure	4 kPa (0.04 kgf/cm <sup>2</sup> ) 0.04 bar 0.57 psig	
Rated Airflow	6 L/min 0.212 cfm	
Maximum Pressure	16 kPa (0.16 kgf/cm <sup>2</sup> ) 0.16 bar 2.28 psig	
Rated Voltage	120 V AC	230 V AC
Power Consumption	6 W	
Rated Frequency	60 Hz	50 Hz
Rated Performance	10,000 hours	
Working Pressure Range	0 to 16 kPa (0 to 0.16 kgf/cm <sup>2</sup> ) 0 to 0.16 bar 0 to 2.28 psig	
Outlet	6 mm O.D. hose barb	
Duty Cycle	Continuous	
Coil Insulation Class	A for 120 V or its equivalent   E for 230 V or its equivalent	
Mounting Dimensions	70 (L) x 72 (W) mm 2 - 3/4" (L) x 2 - 53/64" (W)	
Weight	0.45 kg 0.99 Lbs	
Leadwire Length	300 mm 11 - 13/16"	

### Application Examples

Massage Devices



Bedsore Prevention Mattress



### External Dimensions (Unit: mm)

