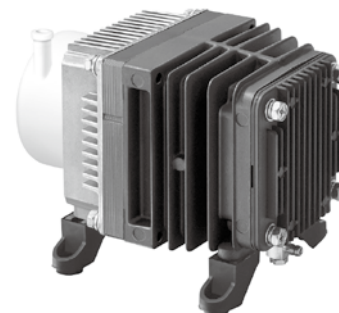
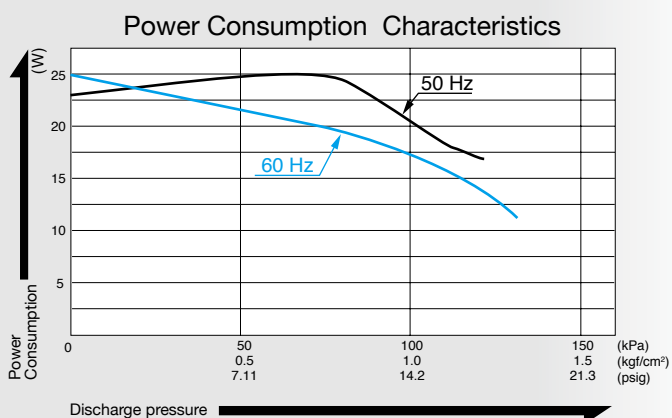
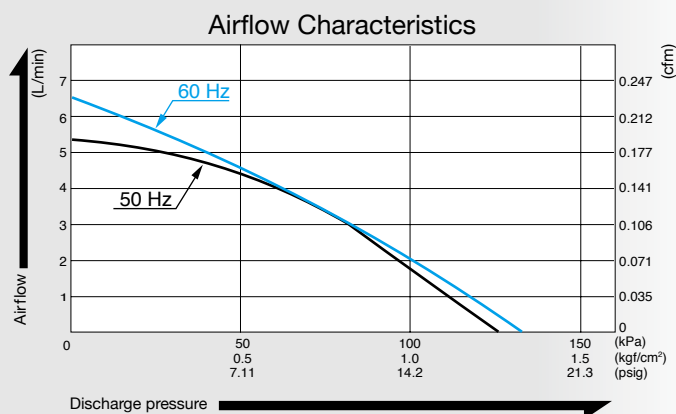


Compressor

Model **ACO207**



Airflow & Power Consumption

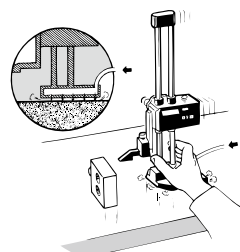


Specifications

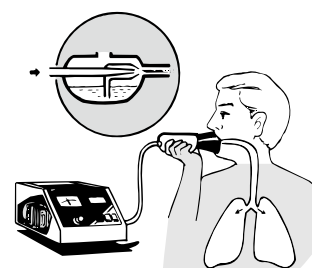
Rated Pressure	70 kPa (0.7 kgf/cm ²) 0.7 bar 9.96 psig	
Rated Airflow	3.5 L/min 0.124 cfm	
Maximum Pressure	100 kPa (1.0 kgf/cm ²) 1.0 bar 14.2 psig	
Rated Voltage	115 V AC	230 V AC
Power Consumption	20 W	25 W
Rated Frequency	60 Hz	50 Hz
Rated Performance	3,000 hours	
Outlet	4.7 mm O.D. hose barb	
Duty Cycle	Continuous	
Coil Insulation Class	E or its equivalent and B for UL	
Mounting Dimensions	75 (L) x 88 (W) mm 2 - 61/64" (L) x 3 - 15/32" (W)	
Weight	1.7 kg 3.7 Lbs	
Leadwire Length	200 mm 7 - 7/8"	

Application Examples

Air Bearing for Precision Machines



Nebulizer



External Dimensions (Unit: mm)

