

delvo

Parts List

Models

DLV7321-BKU

DLV7331-BKU

DLC1213-LUB



Manufactured by:

NITTO KOHKI CO., LTD.

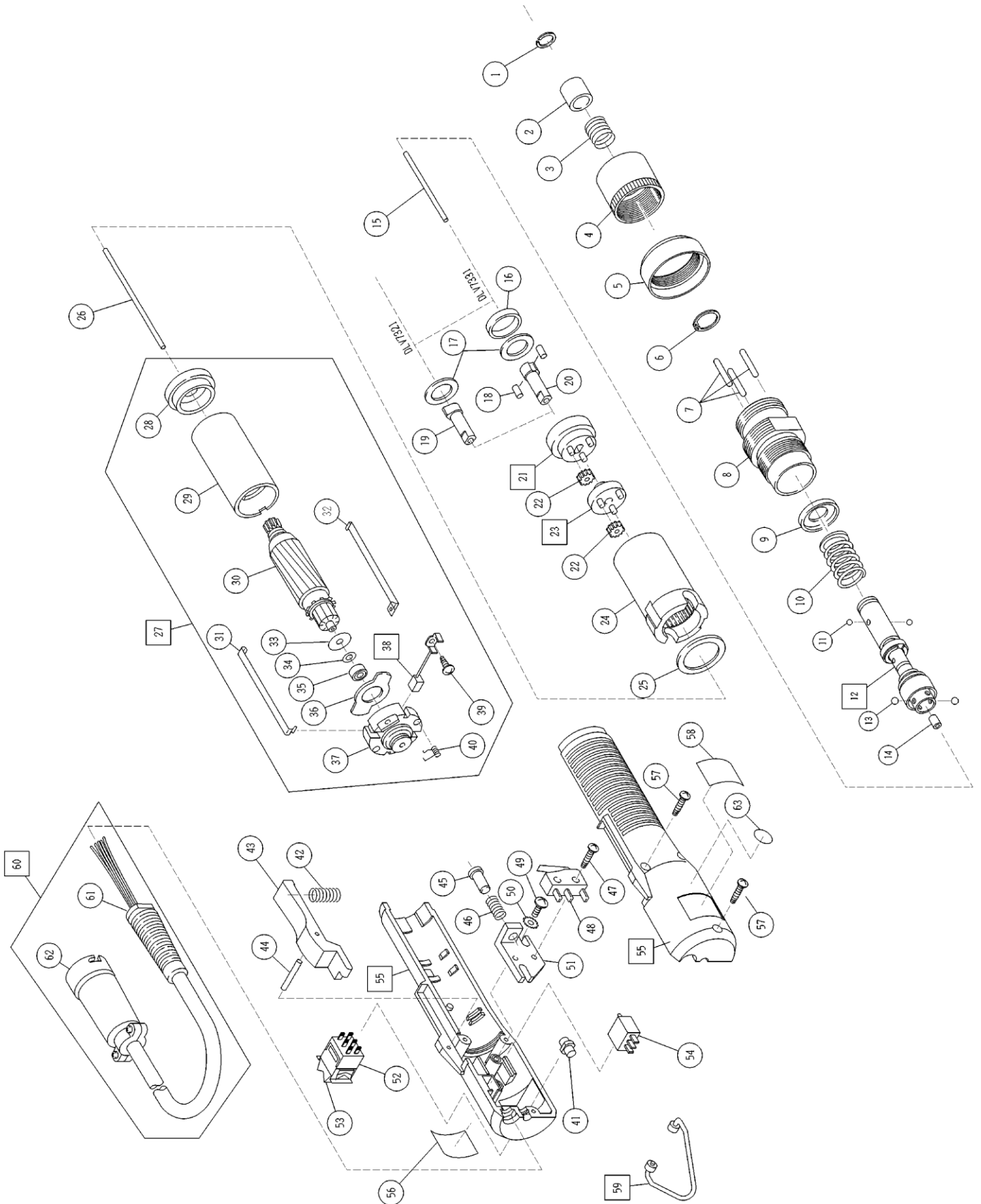
2-9-4, Nakaikegami, Ohta-ku,

Tokyo 146-8555, Japan

Tel: (03) 3755-1111

Fax: (03) 3753-8791

Repair Parts List for DLV7321-BKU and DLV7331-BKU.

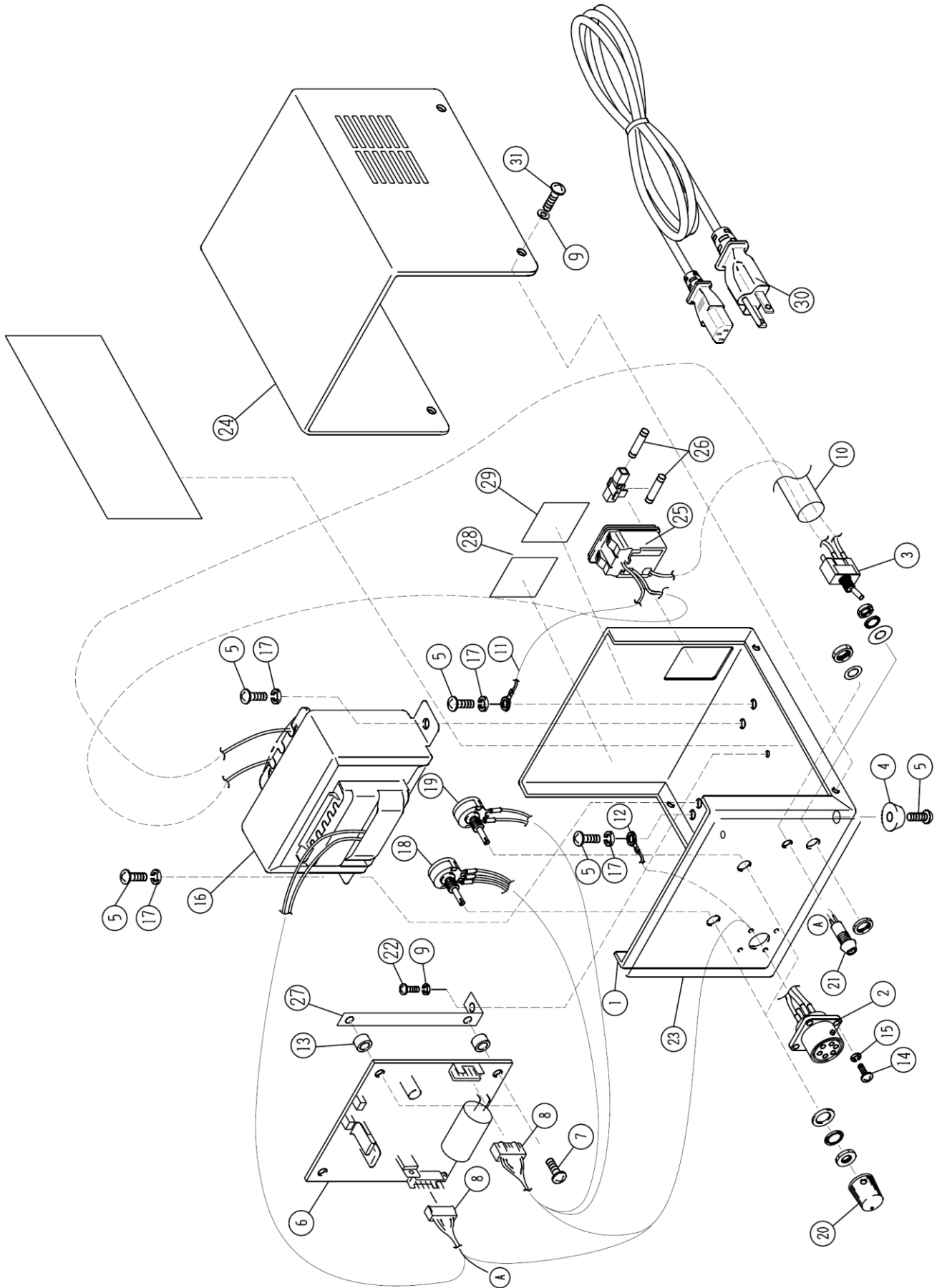


List of DLV7321/7331-BKU

No.	Parts Name	Parts No.	QTY
1	Stop Ring	TV00149	1
2	Holder Clamp	TV00148	1
3	Holder Spring (DLV7321)	TV00277	1
	Holder Spring (DLV7331)	TV00150	1
4	Torque Adjustment Ring	TD00962	1
5	Coupling	TV00011	1
6	Stop Ring	LP10494	1
7	Roller Pin Dia2x19.8L (DLV7321)	TV00510	3
	Roller Pin Dia2x17.8L (DLV7331)	TV00109	3
8	Nose Nut	TV00577	1
9	Spring Plate	TV00961	1
10	Clutch Spring (DLV7321)	TV00034	1
	Clutch Spring (DLV7331)	TV00035	1
11	Steel Ball Dia2.381	CP20000	2
12	Bit Holder Assembly (DLV7321)	TD02228	1
	Bit Holder Assembly (DLV7331)	TD02328	1
13	Steel Ball Dia3 (DLV7321)	TP15767	2
	Steel Ball Dia3.96 (DLV7331)	CP01181	2
14	Guide Sleeve	TV00328	1
15	Pilot Rod Dia1.6x42L	TV00080	1
16	Collar (DLV7331)	TV00042	1
17	Washer	TV00507	1
18	Cam Pin Dia2x4.5L (DLV7331)	TV00043	2
19	Cam (DLV7321)	TV00014	1
20	Cam (DLV7331)	TV00015	1
21	Gear Base (A) Assembly	TD00544	1
22	Idle Gear (A) 15 (DLV7321)	TV00002	6
	Idle Gear (A) 18 (DLV7331)	TV00636	6
23	Gear Base (B) Assembly 15 (DLV7321)	TD00545	1
	Gear Base (B) Assembly 12 (DLV7331)	TD01792	1
24	Gear Case 45 (DLV7321)	TV00028	1
	Gear Case 48 (DLV7331)	TV00029	1
25	Spacer	TV00102	1
26	Pilot Rod Dia1.6x61.5L	TV00077	1
27	Motor Assembly (DLV7321)	TD02210	1
	Motor Assembly (DLV7331)	TD02225	1

28	Front Cover	TV00088	1
29	Yoke Assembly	TD01918	1
30	Rotor Assembly (DLV7321)	TD08774	1
	Rotor Assembly (DLV7331)	TD08775	1
31	Assembling Spring	TV00031	1
32	Assembling Spring	TV00566	1
33	Shim	TV00335	1
34	Shim	TV00767	1
35	Ball Bearing	TV00068	1
36	Side Plate	TV00863	1
37	End Cover	TV00009	1
38	Brush Assembly	TD05743	2
39	Tapping Screw M2x4L	TV00500	2
40	Brush Spring	TV00086	2
41	Brush	TV00929	2
42	Spring	TV00333	1
43	Trigger	TV00610	1
44	Roller Pin Dia.2x15.8L	CQ08854	1
45	Pilot	TV00074	1
46	Pilot Spring	TV00326	1
47	Tapping Screw M2.3x12L	TV00511	2
48	Micro Switch	TV00199	1
49	Screw M3x8L	TV00515	2
50	Toothed Lock Washer	TV00511	2
51	Switch Plate	TV00048	1
52	Change Over Switch	TV00030	1
53	Rocker	TV00258	1
54	Micro Switch	TV00283	1
55	Frame Handle Assembly	TD05039	1
56	Warning Label		1
57	Tapping Screw M2.5x12L	TV00518	3
58	Rating Label		1
59	Lifting Hook Assembly	TD01927	1
60	Power Cord Assembly	TD01793	1
61	Power Cord	TD02209	1
62	Plug	TV00862	1
63	ESD Label		1

Repair Parts List for DLC1213-LUB



List of DLC1213-LUB

No.	Parts Name	Parts No.	Q'ty
1	Chassis	TV04236	1
2	Receptacle	TV00584	1
3	Power Switch	TV00580	1
4	Rubber Foot	TV01094	4
5	Tapping Screw M4x8L	TV02134	8
6	Control Base Assembly	TD02675	1
7	Tapping Screw M3x10L with spring washer	TV02242	4
8	Socket Assembly	TD02435	2
9	Spring Washer M3	TV01948	6
10	Plastic Tube	TV06487	1
11	Ground Wire Assembly	TD02886	1
12	Ground Wire Assembly	TD02719	1
13	Collar	TV02079	4
14	Tapping Screw M2x8L	TV02249	4
15	Spring Washer M2	TV02203	4
16	Transformer	TV05463	1
17	Spring Washer M4	TV01949	4
18	Speed Potentiometer	TV01096	1
19	Soft Start Potentiometer	TV01097	1

20	Potentiometer Knob	TV00339	2
21	Pilot Lamp	TV01093	1
22	Tapping Screw M3x6L	TV01138	2
23	Front Label	TV06971	1
24	Cover	TV02090	1
25	Inlet	TV03198	1
26	Fuse	TV04994	2
27	Control Base Mounting Bracket	TV02091	2
28	Rating Label		1
29	Warning Label		1
30	Power Cord Assembly	TD02957	1
31	Tapping Screw M3x10L	TV01137	4