

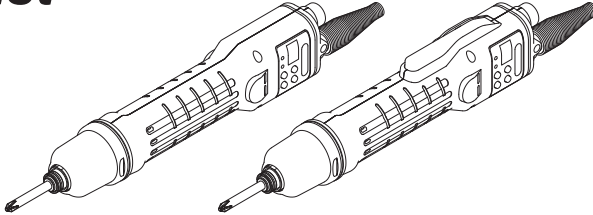
INSTRUCTION MANUAL

Professional tool ELECTRIC SCREWDRIVER

delvo

Model: DLV30S/DLV45S/DLV70S AY Series

Parts List



This document is for the special repair operator.

EN

General users should never disassemble the product.

When repair of the tool or part replacement becomes necessary, contact the retailer where you purchased the tool.

FR

Le présent document est destiné aux techniciens de réparation spécialisés.

Les utilisateurs généraux ne doivent jamais démonter le produit.

Lorsqu'une réparation ou le remplacement de pièces est nécessaire, contactez le revendeur auprès duquel vous avez acheté l'outil.

DE

Dieses Dokument gilt für speziell ausgebildete Wartungstechniker.

Allgemeine Nutzer dürfen das Produkt niemals zerlegen.

Wenn das Werkzeug repariert oder ein Teil ausgetauscht werden muss, wenden Sie sich an den Händler, von dem Sie das Werkzeug erworben haben.

IT

Questo documento è destinato all'operatore addetto alle riparazioni speciali.

Gli utenti generici non devono mai tentare di smontare il prodotto.

Per la riparazione dell'utensile o qualora si renda necessaria la sostituzione di un pezzo, rivolgersi al rivenditore presso il quale è stato acquistato l'utensile.

ES

Este documento es para el operador de reparaciones especiales.

Los usuarios generales no deberán desmontar jamás el producto.

Para la reparación de la herramienta o si resulta necesaria la sustitución de piezas, póngase en contacto con el vendedor del que adquirió la herramienta.

PT

Este documento destina-se ao operador de reparações específico.

Os utilizadores gerais não devem nunca desmontar o produto.

Se for necessário substituir alguma peça ou reparar a ferramenta, entre em contacto com o revendedor onde adquiriu a ferramenta.

SC

本文档专为特约维修操作人员准备。

一般用户严禁拆解产品。

需要维修工具或更换零件时，请联系购买工具的零售商。

JP

本書は、専門修理業者向けの資料です。

一般ユーザーの方は、絶対に製品を分解しないでください。

工具の修理や部品の交換が必要な場合は、お買い求めの販売店にお問い合わせください。

• Please read manual carefully before you attempt to use your tool so that you may use it properly and safely.

• Due to continuous product development/improvement the specifications and configurations in this document are subject to change without prior notice.

Manufactured by.

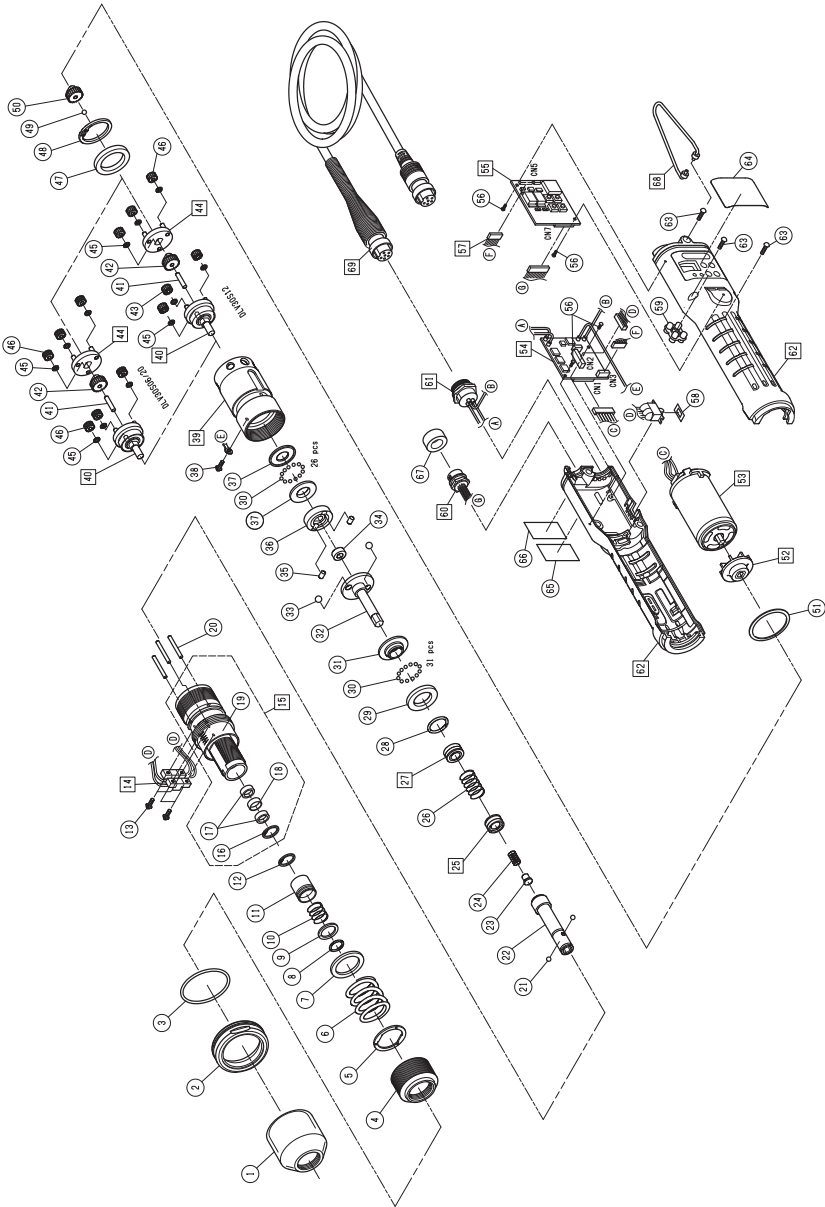
NITTO KOHKI CO., LTD.

9-4, Nakaikegami 2-chome, Ohta-ku, Tokyo, 146-8555, Japan
Tel : +81-3-3755-1111 Fax : +81-3-3753-8791

(Original Instructions)

TV07532-1 06/2017

EXPLODED VIEW (DLV30S06P / DLV30S12P / DLV30S20P)

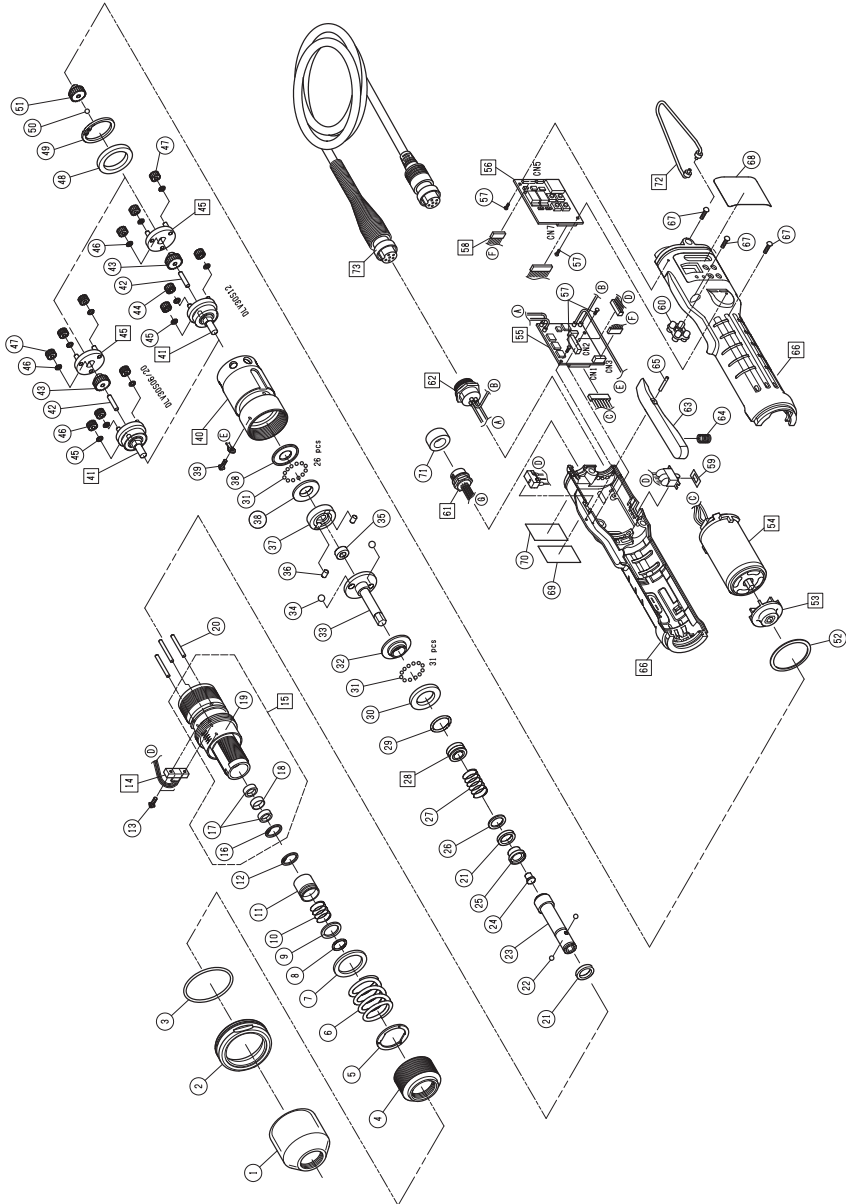


PARTS LIST (DLV30S06P / DLV30S12P / DLV30S20P)

No.	Parts Name	Parts No.	Q'ty
1	Torque Adjustment Ring Cover	TV07541	1
2	Aluminum Coupling	TV05637	1
3	Rubber Ring (Blue) (DLV30S12)	TV05638	1
	Rubber Ring (Red) (DLV30S20)	TV05639	1
	Rubber Ring (Yellow) (DLV30S06)	TV05640	1
4	Torque Adjustment Ring	TV04534	1
5	Spring Plate Assembly	TD04385	1
6	Clutch Spring (High Torque Spring)	TV04593	1
	Clutch Spring (Low Torque Spring: Accessories)	TV05146	1
7	Plate	TV05123	1
8	Stop Ring	TV06619	1
9	Holder Collar	TV05124	1
10	Holder Spring	TV00356	1
11	Holder Clamp	TV05126	1
12	Stop Ring	LP10494	1
13	Sems Screw M2.6X8L	TV04553	4
14	Sensor Assembly	TD08217	1
15	Clutch Case Assembly	TD05195	1
16	Stop Ring	TV05254	1
17	Needle Bearing	TV06101	2
18	Collar	TV06102	1
19	Clutch Case	TV05252	1
20	Roller Pin Dia.2.5X21.8L	TV04543	3
21	Steel Ball Dia.2.381 (HEX 6.35mm (1/4") Type)	CP20000	2
22	Bit Holder (HEX 6.35mm (1/4") Type)	TV05165	1
23	Stopper	TV05256	1
24	Push Spring	TV05255	1
25	Magnet Plate F ASSY	TD07347	1
26	Spring	TV04665	1
27	Brake Magnet Assembly	TD05403	1
28	Stop Ring	TV07367	1
29	Thrust Plate F	TV07363	1
30	Steel Ball Dia.2	TV00121	57
31	Cam Ring	TV07364	1
32	Cam Guide	TV05145	1
33	Steel Ball Dia.5	TP15428	2
34	Spacer	TV04751	1
35	Roller Pin Dia.3.5X5L	TV04538	2
36	Cam	TV04433	1
37	Thrust Plate	TV07366	2
38	Sems Screw M2.6X4L	TV00438	2

No.	Parts Name	Parts No.	Q'ty
39	Gear Case Assembly (DLV30S12)	TD05043	1
	Gear Case Assembly (DLV30S06/ DLV30S20)	TD05075	1
40	Gear Base A Assembly (DLV30S06)	TD04386	1
	Gear Base A Assembly (DLV30S12)	TD05070	1
	Gear Base A Assembly (DLV30S20)	TD05071	1
41	Roller Pin Dia.3X13.8L	TV04592	1
	Spindle Gear 11 (DLV30S06)	TV06023	1
42	Spindle Gear 19 (DLV30S12)	TV05125	1
	Spindle Gear 23 (DLV30S20)	TV05258	1
43	Idle Gear 14 (DLV30S12)	TV07342	3
44	Gear Base B Assembly (DLV30S06)	TD04135	1
	Gear Base B Assembly (DLV30S12)	TD05110	1
	Gear Base B Assembly (DLV30S20)	TD05111	1
45	Spacer	TV00147	6
	Idle Gear 19 (DLV30S06)	TV07344	6
46	Idle Gear 17 (DLV30S12)	TV07343	3
	Idle Gear 13 (DLV30S20)	TV07335	6
47	Washer	TV04289	1
48	Stop Ring	TV00140	1
49	Steel Ball Dia.3	TP15767	1
50	Motor Gear 11 (DLV30S06)	TV07347	1
	Motor Gear 13 (DLV30S12)	TV07346	1
	Motor Gear 23 (DLV30S20)	TV07345	1
51	Washer	TV04670	1
52	Fan Assembly	TD08156	1
53	Motor Assembly	TD06661	1
54	Control Base Assembly	TD08560	1
55	Board Assembly for Count	TD08563	1
56	Tapping Screw 2X4L	TV07410	4
57	Harness Assembly	TD08203	1
58	Insulated Film for Switch	TV07409	1
59	Silicon Switch	TV07554	1
60	Receptacle Assembly (Signal connection)	TD08218	1
61	Receptacle Assembly (Power supply connection)	TD08566	1
62	Frame Handle AB Assembly	TD08424	1
63	Screw M3X12L	TV02746	3
64	Operation Plate	TV07411	1
65	Warning Plate		1
66	Rating Plate		1
67	Connector Cap	TV07555	1
68	Suspension Bail	TD08220	1
69	Connection Cord DLW9073	TD08568	1

EXPLODED VIEW (DLV30S06L / DLV30S12L / DLV30S20L)

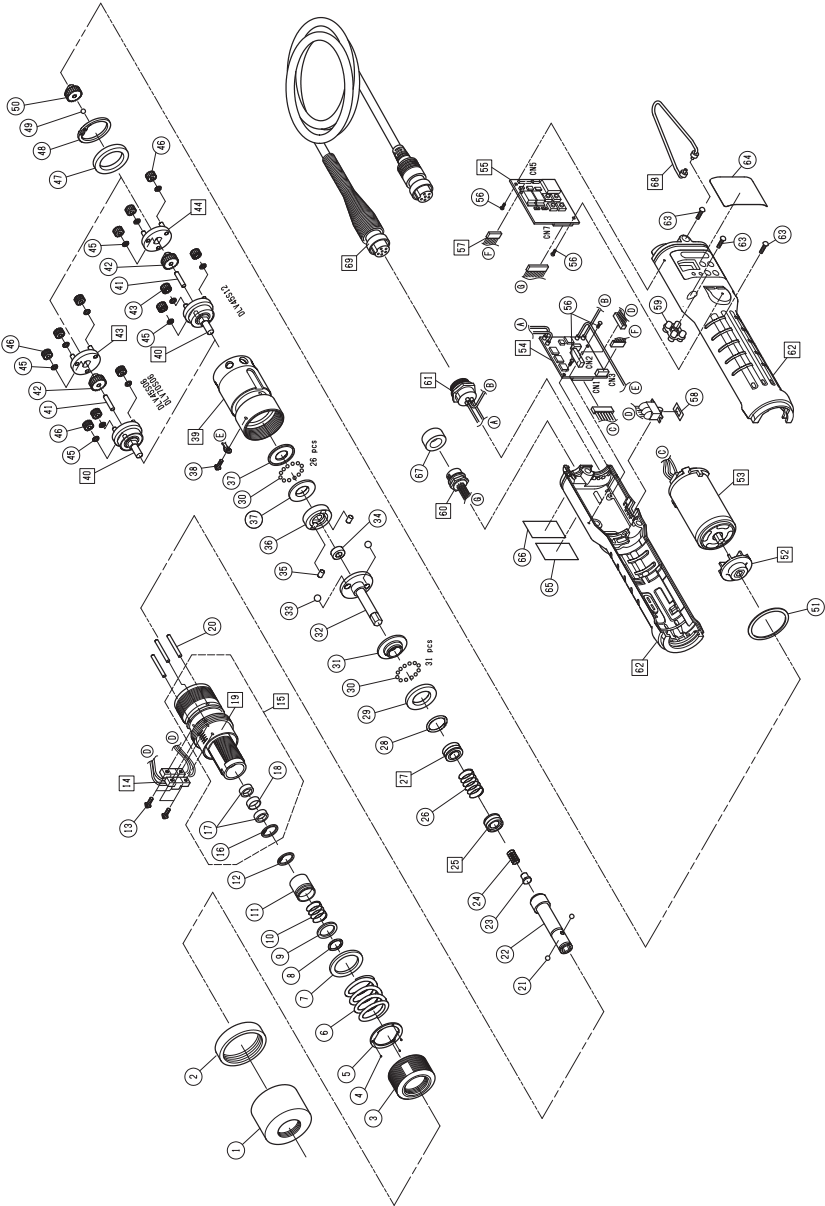


PARTS LIST (DLV30S06L / DLV30S12L / DLV30S20L)

No.	Parts Name	Parts No.	Q'ty
1	Torque Adjustment Ring Cover	TV07541	1
2	Aluminum Coupling	TV05637	1
3	Rubber Ring (Blue) (DLV30S12)	TV05638	1
	Rubber Ring (Red) (DLV30S20)	TV05639	1
	Rubber Ring (Yellow) (DLV30S06)	TV05640	1
4	Torque Adjustment Ring	TV04534	1
5	Spring Plate Assembly	TD04385	1
6	Clutch Spring (High Torque Spring)	TV04593	1
	Clutch Spring (Low Torque Spring: Accessories)	TV05146	1
7	Plate	TV05123	1
8	Stop Ring	TV06619	1
9	Holder Collar	TV05124	1
10	Holder Spring	TV00356	1
11	Holder Clamp	TV05126	1
12	Stop Ring	LP10494	1
13	Sems Screw M2.6X8L	TV04553	2
14	Sensor Assembly	TD08225	1
15	Clutch Case Assembly	TD05195	1
16	Stop Ring	TV05254	1
17	Needle Bearing	TV06101	2
18	Collar	TV06102	1
19	Clutch Case	TV05252	1
20	Roller Pin Dia.2.5X21.8L	TV04543	3
21	Spacer	TV05420	2
22	Steel Ball Dia.2.381 (HEX 6.35mm (1/4") Type)	CP20000	2
23	Bit Holder (HEX 6.35mm (1/4") Type)	TV05165	1
24	Stopper	TV05256	1
25	Magnet Plate F	TV04659	1
26	Spacer	TV04545	1
27	Spring	TV04665	1
28	Brake Magnet Assembly	TD05403	1
29	Stop Ring	TV07367	1
30	Thrust Plate F	TV07363	1
31	Steel Ball Dia.2	TV00121	57
32	Cam Ring	TV07364	1
33	Cam Guide	TV05145	1
34	Steel Ball Dia.5	TP15428	2
35	Spacer	TV04751	1
36	Roller Pin Dia.3.5X5L	TV04538	2
37	Cam	TV04433	1
38	Thrust Plate	TV07366	2
39	Sems Screw M2.6X4L	TV00438	2
40	Gear Case Assembly (DLV30S12)	TD05043	1
	Gear Case Assembly (DLV30S06/ DLV30S20)	TD05075	1

No.	Parts Name	Parts No.	Q'ty
41	Gear Base A Assembly (DLV30S06)	TD04386	1
	Gear Base A Assembly (DLV30S12)	TD05070	1
42	Gear Base A Assembly (DLV30S20)	TD05071	1
	Roller Pin Dia.3X13.8L	TV04592	1
43	Spindle Gear 11 (DLV30S06)	TV06023	1
	Spindle Gear 19 (DLV30S12)	TV05125	1
	Spindle Gear 23 (DLV30S20)	TV05258	1
44	Idle Gear 14 (DLV30S12)	TV07342	3
45	Gear Base B Assembly (DLV30S06)	TD04135	1
	Gear Base B Assembly (DLV30S12)	TD05110	1
	Gear Base B Assembly (DLV30S20)	TD05111	1
46	Spacer	TV00147	6
47	Idle Gear 19 (DLV30S06)	TV07344	6
	Idle Gear 17 (DLV30S12)	TV07343	3
	Idle Gear 13 (DLV30S20)	TV07335	6
48	Washer	TV04289	1
49	Stop Ring	TV00140	1
50	Steel Ball Dia.3	TP15767	1
51	Motor Gear 11 (DLV30S06)	TV07347	1
	Motor Gear 13 (DLV30S12)	TV07346	1
	Motor Gear 23 (DLV30S20)	TV07345	1
52	Washer	TV04670	1
53	Fan Assembly	TD08156	1
54	Motor Assembly	TD06661	1
55	Control Base Assembly	TD08560	1
56	Board Assembly for Count	TD08563	1
57	Tapping Screw 2X4L	TV07410	4
58	Harness Assembly	TD08203	1
59	Insulated Film for Switch	TV07409	1
60	Silicon Switch	TV07554	1
61	Receptacle Assembly (Signal connection)	TD08218	1
62	Receptacle Assembly (Power supply connection)	TD08566	1
63	Lever	TV07348	1
64	Spring	TV00235	1
65	Roller Pin Dia.2X13.8L	TV07420	1
66	Frame Handle AB Assembly	TD08427	1
67	Screw M3X12L	TV02746	3
68	Operation Plate	TV07411	1
69	Warning Plate		1
70	Rating Plate		1
71	Connector Cap	TV07555	1
72	Suspension Bail	TD08220	1
73	Connection Cord DLW9073	TD08568	1

EXPLODED VIEW (DLV45S06P / DLV45S12P / DLV70S06P)

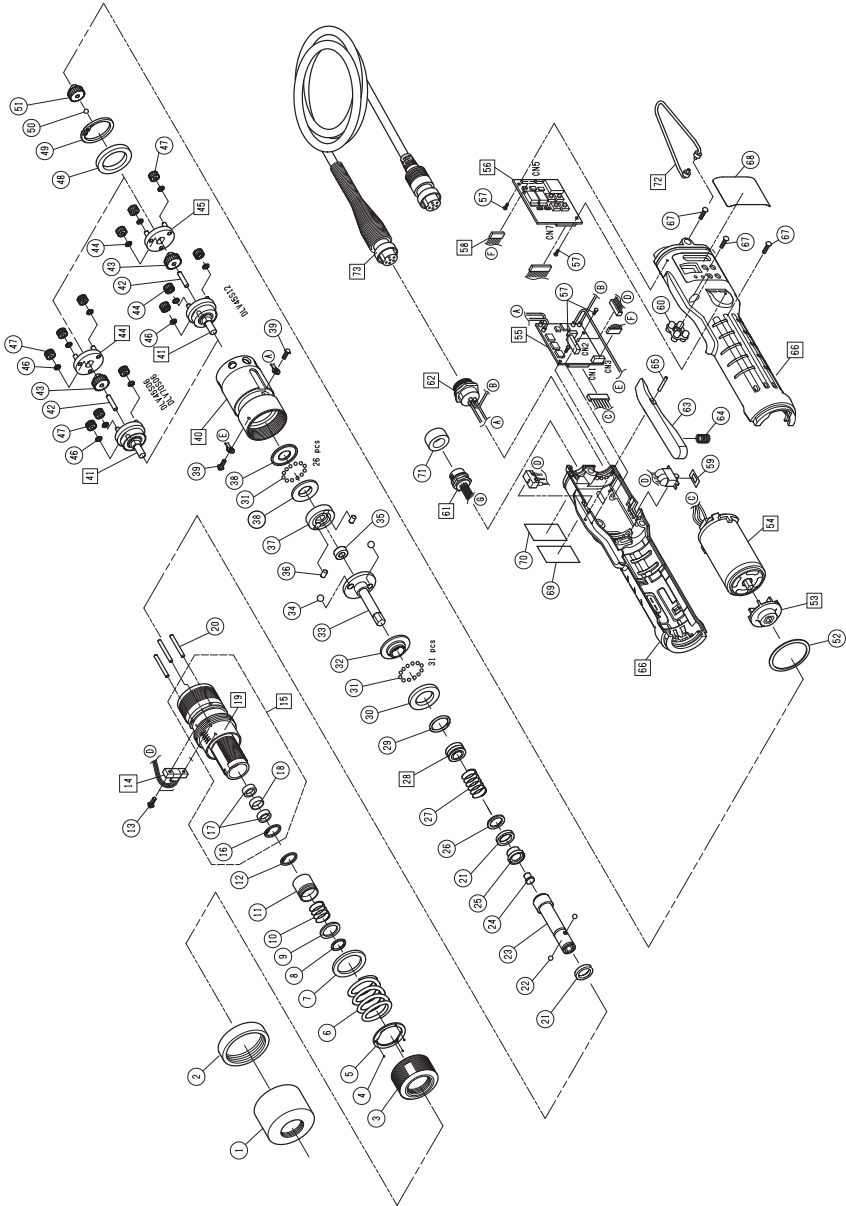


PARTS LIST (DLV45S06P / DLV45S12P / DLV70S06P)

No.	Parts Name	Parts No.	Q'ty
1	Torque Adjustment Ring Cover	TV05705	1
2	Coupling	TV06062	1
3	Torque Adjustment Ring	TV05703	1
4	Steel Ball Dia.1.588	TP17155	3
5	Spring Plate	TV05702	1
6	Clutch Spring (DLV45S)	TV05717	1
	Clutch Spring (DLV70S)	TV05718	1
7	Plate	TV05700	1
8	Stop Ring	TV06619	1
9	Holder Collar	TV05124	1
10	Holder Spring	TV00356	1
11	Holder Clamp	TV05126	1
12	Stop Ring	LP10494	1
13	Sems Screw M2.6X8L	TV04553	4
14	Sensor Assembly	TD08217	1
15	Clutch Case Assembly	TD06619	1
16	Stop Ring	TV05254	1
17	Needle Bearing	TV06101	2
18	Collar	TV06102	1
19	Clutch Case Sub Assembly	TD06998	1
20	Roller Pin Dia.2.5X21.8L	TV04543	3
21	Steel Ball Dia.2.381 (HEX 6.35mm (1/4") Type)	CP20000	2
22	Bit Holder (HEX 6.35mm (1/4") Type)	TV05165	1
23	Stopper	TV05256	1
24	Push Spring	TV05255	1
25	Magnet Plate F ASSY	TD07347	1
26	Spring	TV04665	1
27	Brake Magnet Assembly	TD05403	1
28	Stop Ring	TV07367	1
29	Thrust Plate F	TV07363	1
30	Steel Ball Dia.2	TV00121	57
31	Cam Ring	TV07365	1
32	Cam Guide	TV05699	1
33	Steel Ball Dia.5	TP15428	2
34	Spacer	TV04751	1
35	Roller Pin Dia.3.5X5L	TV04538	2
36	Cam	TV04433	1
37	Thrust Plate	TV07366	2
38	Sems Screw M2.6X4L	TV00438	2
39	Gear Case Assembly (DLV45S12)	TD05043	1
	Gear Case Assembly (DLV45S06/ DLV70S06)	TD05075	1

No.	Parts Name	Parts No.	Q'ty
40	Gear Base A Assembly (DLV45S12)	TD05932	1
	Gear Base A Assembly (DLV45S06/ DLV70S06)	TD05933	1
41	Roller Pin Dia.3X13.8L	TV04592	1
42	Spindle Gear 11 (DLV45S06/ DLV70S06)	TV06023	1
	Spindle Gear 19 (DLV45S12)	TV05125	1
43	Idle Gear 14 (DLV45S12)	TV07342	3
44	Gear Base B Assembly (DLV45S06/ DLV70S06)	TD04135	1
	Gear Base B Assembly (DLV45S12)	TD05110	1
45	Spacer	TV00147	6
46	Idle Gear 19 (DLV45S06/DLV70S06)	TV07344	6
	Idle Gear 17 (DLV45S12)	TV07343	3
47	Washer	TV04289	1
48	Stop Ring	TV00140	1
49	Steel Ball Dia.3	TP15767	1
50	Motor Gear 11 (DLV45S06/ DLV70S06)	TV07347	1
	Motor Gear 13 (DLV45S12)	TV07346	1
51	Washer	TV04670	1
52	Fan Assembly	TD08156	1
53	Motor Assembly	TD06661	1
54	Control Base Assembly	TD08560	1
55	Board Assembly for Count	TD08563	1
56	Tapping Screw 2X4L	TV07410	4
57	Harness Assembly	TD08203	1
58	Insulated Film for Switch	TV07409	1
59	Silicon Switch	TV07554	1
60	Receptacle Assembly (Signal connection)	TD08218	1
61	Receptacle Assembly (Power supply connection)	TD08566	1
62	Frame Handle AB Assembly	TD08424	1
63	Screw M3X12L	TV02746	3
64	Operation Plate	TV07411	1
65	Warning Plate		1
66	Rating Plate		1
67	Connector Cap	TV07555	1
68	Suspension Bail	TD08220	1
69	Connection Cord DLW9073	TD08568	1

EXPLODED VIEW (DLV45S06L / DLV45S12L / DLV70S06L)



PARTS LIST (DLV45S06L / DLV45S12L / DLV70S06L)

No.	Parts Name	Parts No.	Q'ty
1	Torque Adjustment Ring Cover	TV05705	1
2	Coupling	TV06062	1
3	Torque Adjustment Ring	TV05703	1
4	Steel Ball Dia.1.588	TP17155	3
5	Spring Plate	TV05702	1
6	Clutch Spring (DLV45S)	TV05717	1
	Clutch Spring (DLV70S)	TV05718	1
7	Plate	TV05700	1
8	Stop Ring	TV06619	1
9	Holder Collar	TV05124	1
10	Holder Spring	TV00356	1
11	Holder Clamp	TV05126	1
12	Stop Ring	LP10494	1
13	Sems Screw M2.6X8L	TV04553	4
14	Sensor Assembly	TD08217	1
15	Clutch Case Assembly	TD06619	1
16	Stop Ring	TV05254	1
17	Needle Bearing	TV06101	2
18	Collar	TV06102	1
19	Clutch Case Sub Assembly	TD06998	1
20	Roller Pin Dia.2.5X21.8L	TV04543	3
21	Spacer	TV05420	2
22	Steel Ball Dia.2.381 (HEX 6.35mm (1/4") Type)	CP20000	2
23	Bit Holder (HEX 6.35mm (1/4") Type)	TV05165	1
24	Stopper	TV05256	1
25	Magnet Plate F	TV04659	1
26	Spacer	TV04545	1
27	Spring	TV04665	1
28	Brake Magnet Assembly	TD05403	1
29	Stop Ring	TV07367	1
30	Thrust Plate F	TV07363	1
31	Steel Ball Dia.2	TV00121	57
32	Cam Ring	TV07365	1
33	Cam Guide	TV05699	1
34	Steel Ball Dia.5	TP15428	2
35	Spacer	TV04751	1
36	Roller Pin Dia.3.5X5L	TV04538	2
37	Cam	TV04433	1
38	Thrust Plate	TV07366	2
39	Sems Screw M2.6X4L	TV00438	2
40	Gear Case Assembly (DLV45S12)	TD05043	1
	Gear Case Assembly (DLV45S06/ DLV70S06)	TD05075	1

No.	Parts Name	Parts No.	Q'ty
41	Gear Base A Assembly (DLV45S12)	TD05932	1
	Gear Base A Assembly (DLV45S06/ DLV70S06)	TD05933	1
42	Roller Pin Dia.3X13.8L	TV04592	1
43	Spindle Gear 11 (DLV45S06/ DLV70S06)	TV06023	1
	Spindle Gear 19 (DLV45S12)	TV05125	1
44	Idle Gear 14 (DLV45S12)	TV07342	3
45	Gear Base B Assembly (DLV45S06/ DLV70S06)	TD04135	1
	Gear Base B Assembly (DLV45S12)	TD05110	1
46	Spacer	TV00147	6
47	Idle Gear 19 (DLV45S06/DLV70S06)	TV07344	6
	Idle Gear 17 (DLV45S12)	TV07343	3
48	Washer	TV04289	1
49	Stop Ring	TV00140	1
50	Steel Ball Dia.3	TP15767	1
51	Motor Gear 11 (DLV45S06/ DLV70S06)	TV07347	1
	Motor Gear 13 (DLV45S12)	TV07346	1
52	Washer	TV04670	1
53	Fan Assembly	TD08156	1
54	Motor Assembly	TD06661	1
55	Control Base Assembly	TD08560	1
56	Board Assembly for Count	TD08563	1
57	Tapping Screw 2X4L	TV07410	4
58	Harness Assembly	TD08203	1
59	Insulated Film for Switch	TV07409	1
60	Silicon Switch	TV07554	1
61	Receptacle Assembly (Signal connection)	TD08218	1
62	Receptacle Assembly (Power supply connection)	TD08566	1
63	Lever	TV07348	1
64	Spring	TV00235	1
65	Roller Pin Dia.2X13.8L	TV07420	1
66	Frame Handle AB Assembly	TD08427	1
67	Screw M3X12L	TV02746	3
68	Operation Plate	TV07411	1
69	Warning Plate		1
70	Rating Plate		1
71	Connector Cap	TV07555	1
72	Suspension Bail	TD08220	1
73	Connection Cord DLW9073	TD08568	1