

delvo

Parts List

Models

DLV02SL-CKE

DLV12SL-CKE

DLV16SL-CKE



Manufactured by:

NITTO KOHKI CO., LTD.

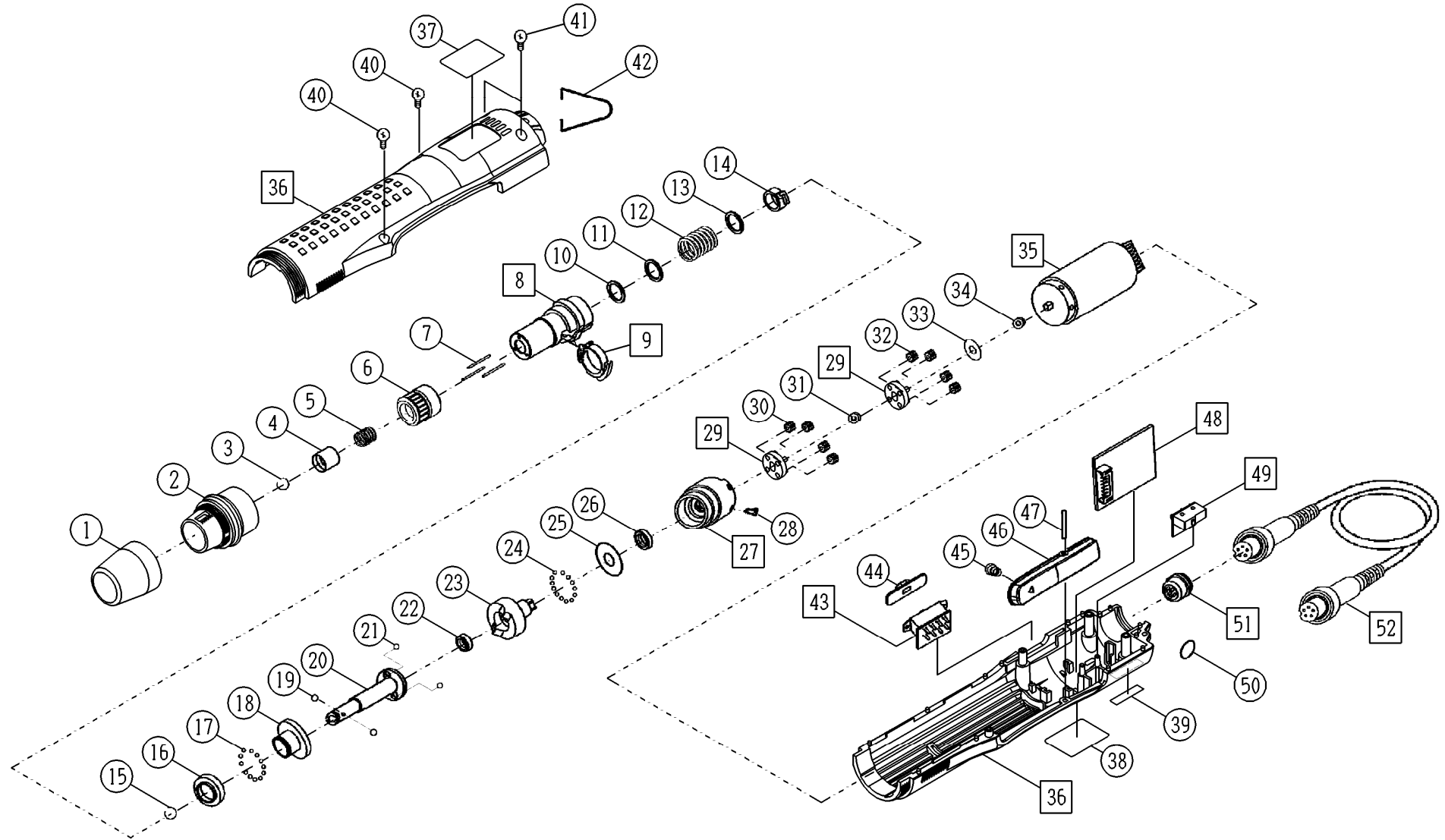
2-9-4, Nakaikegami, Ohta-ku,

Tokyo 146-8555, Japan

Tel : 81(3) 3755-1111

Fax : 81(3) 3753-8791

Repair Parts List for DLV02/12/16SL-CKE



List of DLV02/12/16SL-CKE

No.	Parts Name	Parts No.	Q'TY
1	Torque Adjustment Ring Cover	TV06787	1
2	Front Cover	TV06786	1
3	Stop Ring	TV06830	1
4	Holder Clamp	TV06831	1
5	Holder Spring(DLV12,DLV16 type)	TV06833	1
	Holder Spring(DLV02 type)	TV07304	1
6	Torque Adjustment Ring	TV06828	1
7	Roller Pin Dia.2 × 17.8L	TV06829	3
8	Hammer Casing Assembly	TD07565	1set
9	Micro Switch Assembly	TD07566	1set
10	Spacer	TV06834	2
11	Spacer	TV06835	1
12	Spring (DLV02 type)	TV06867	1
	Spring (DLV12 type)	TV06836	1
	Spring (DLV16 type)	TV06868	1
13	Spacer	TV06837	1
14	Micro Switch Base	TV06838	1
15	Stop Ring	TV06839	1
16	Thrust Plate	TV06840	1
17	Steel Ball Dia.2.5	TV06841	16
18	Clutch Case	TV06842	1
19	Steel Ball Dia.2.0	TV06847	2
20	Cam Guide 1/4"	TV06843	1
21	Steel Ball Dia.4	TV06844	2
22	Ball Bearing MR105ZZ	TV06845	1
23	Cam A (DLV02 type)	TV06866	1
	Cam B (DLV12,DLV16 type)	TV06846	1

No.	Parts Name	Parts No.	Q'TY
24	Steel Ball Dia.2.0	TV06847	20
25	Spacer	TV06848	1
	Spacer	TV07305	1
26	Ball Bearing MR148ZZ	TV06849	1
27	Gear Case Assembly	TD07558	1set
28	Screw M2.5 × 8L	TV06850	4
29	Gear Base Assembly	TD07559	2set
30	Idle Gear 14(DLV12,DLV16 type)	TV06851	4
	Idle Gear 14(DLV02 type)	TV07306	4
31	Spindle Gear 14(DLV12,DLV16 type)	TV06852	1
	Spindle Gear 14(DLV02 type)	TV07307	1
32	Idle Gear 14 B	TV06818	4
33	Spacer	TV06854	4
34	Motor Gear 14	TV06855	1
35	Motor Assembly	TD07561	1set
36	Frame Handle Assembly	TD07470	1set
37	Model Label (DLV02 type)	TV06869	1
	Model Label (DLV12 type)	TV06812	1
	Model Label (DLV16type)	TV06870	1
38	Warning Label	TV06813	1
39	Serial Number Label	TV06819	1
40	Screw M2.0 × 6L	TV06856	2
41	Screw M2.6 × 5L	TV06857	2
42	Suspension Bail A	TV06858	1
43	Slide Switch Assembly	TD07562	1set
44	Slide Switch Cover	TV06863	1
45	Spring	TV06860	1

No.	Parts Name	Parts No.	Q'TY
46	Lever	TV06861	1
47	Roller Pin Dia.2 × 15.2L	TV06862	1
48	Control Base Assembly	TD07564	1set
49	Limit Switch Assembly	TD07563	1set
50	Suspension Bail B	TV06859	1
51	Receptacle Assembly	TD07560	1set
52	Cord Assembly	TD07568	1set



Manufactured by:

NITTO KOHKI CO., LTD.

2-9-4, Nakaikigami, Ohta-ku, Tokyo 146-8555, Japan

Tel : 81(3) 3755-1111

Fax : 81(3) 3753-8791