

delvo

Parts List

Models

DLV02SL-BKE

DLV12SL-BKE

DLV16SL-BKE



Manufactured by:

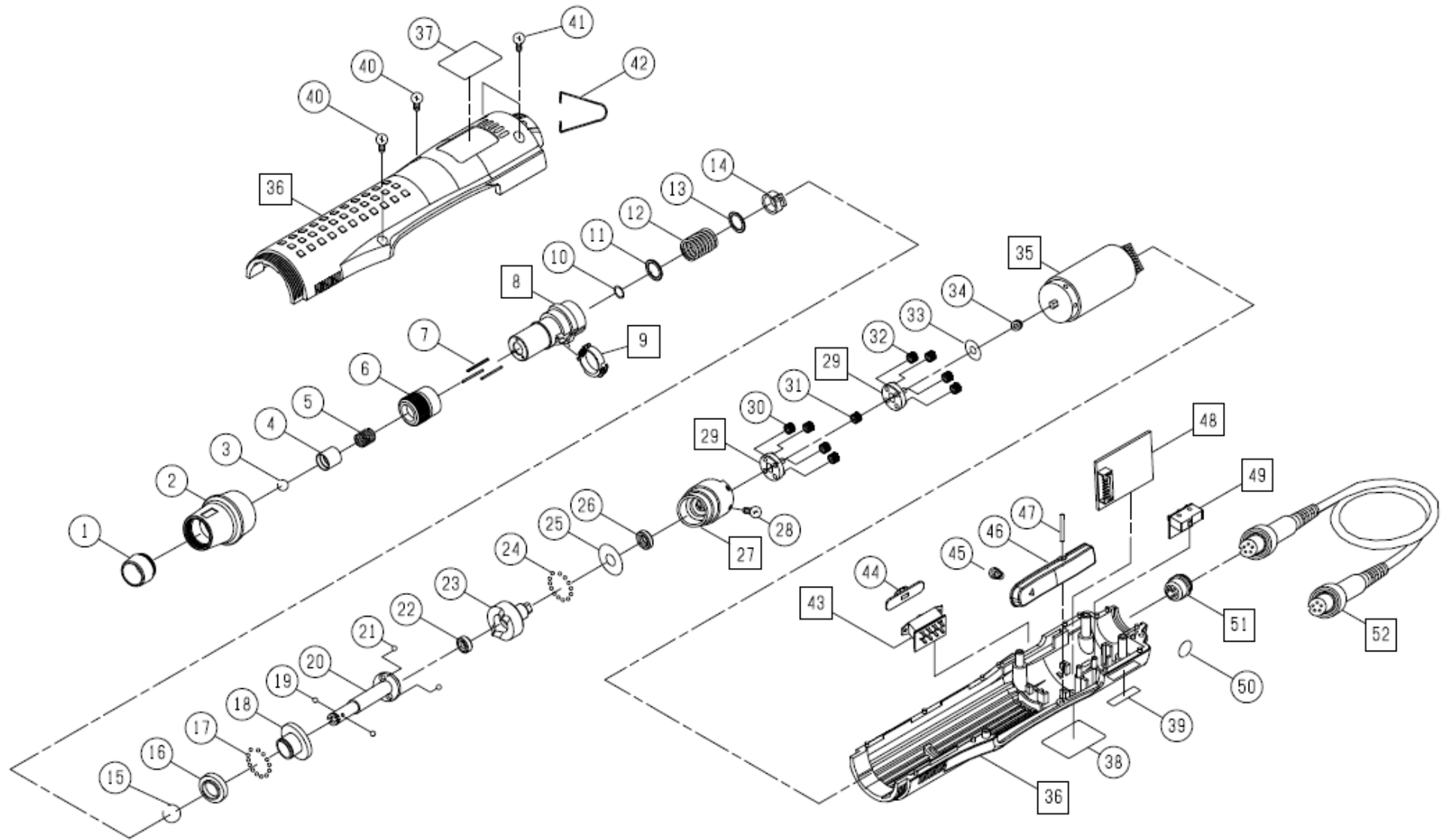
NITTO KOHKI CO., LTD.

9-4, Nakaikegami 2-chome,

Ohta-ku, Tokyo, 146-8555, Japan

Tel : +81-3-3755-1111

Fax : +81-3-3753-8791

Repair Parts List for DLV02/12/16SL-BKE

List of DLV02/12/16SL-BKE

No.	Parts Name	Parts No.	Q'TY	No.	Parts Name	Parts No.	Q'TY	No.	Parts Name	Parts No.	Q'TY
1	Torque Adjustment Ring Cover	TV07315	1	24	Steel Ball Dia.2.0	TV06847	20	46	Lever	TV07323	1
2	Front Cover	TV07317	1	25	Spacer	TV06848	1	47	Roller Pin Dia.2 × 15.2L	TV06862	1
3	Stop Ring	TV06830	1		Spacer	TV07305	1	48	Control Base Assembly	TD07564	1set
4	Holder Clamp	TV06831	1	26	Ball Bearing MR148ZZ	TV06849	1	49	Limit Switch Assembly	TD07563	1set
5	Holder Spring(DLV12,DLV16 type)	TV06833	1	27	Gear Case Assembly	TD07558	1set	50	Suspension Bail B	TV06859	1
	Holder Spring(DLV02 type)	TV07304	1	28	Screw M2.5 × 8L	TV06850	4	51	Receptacle Assembly	TD07560	1set
6	Torque Adjustment Ring	TV06828	1	29	Gear Base Assembly	TD07559	2set	52	Cord Assembly	TD07568	1set
7	Roller Pin Dia.2 × 17.8L	TV06829	3	30	Idle Gear 14(DLV12,DLV16 type)	TV06851	4				
8	Hammer Casing Assembly	TD07565	1set		Idle Gear 14(DLV02 type)	TV07306	4				
9	Micro Switch Assembly	TD07566	1set	31	Spindle Gear 14(DLV12,DLV16 type)	TV06852	1				
10	Spacer	TV06834	2		Spindle Gear 14(DLV02 type)	TV07307	1				
11	Spacer	TV06835	1	32	Idle Gear 14 B	TV06818	4				
12	Spring (DLV02 type)	TV06867	1	33	Spacer	TV06854	4				
	Spring (DLV12 type)	TV06836	1	34	Motor Gear 14	TV06855	1				
	Spring (DLV16 type)	TV06868	1	35	Motor Assembly	TD07561	1set				
13	Spacer	TV06837	1	36	Frame Handle Assembly	TD08149	1set				
14	Micro Switch Base	TV06838	1	37	Model Label (DLV02 type)	TV07327	1				
15	Stop Ring	TV06839	1		Model Label (DLV12 type)	TV07320	1				
16	Thrust Plate	TV06840	1		Model Label (DLV16type)	TV07328	1				
17	Steel Ball Dia.2.5	TV06841	16	38	Warning Label	TV07322	1				
18	Clutch Case	TV06842	1	39	Serial Number Label	TV07321	1				
19	Steel Ball Dia.2.0	TV06847	2	40	Screw M2.0 × 6L	TV06856	2				
20	Cam Guide 1/4"	TV06843	1	41	Screw M2.6 × 5L	TV06857	2				
21	Steel Ball Dia.4	TV06844	2	42	Suspension Bail A	TV06858	1				
22	Ball Bearing MR105ZZ	TV06845	1	43	Slide Switch Assembly	TD07562	1set				
23	Cam A (DLV02 type)	TV06866	1	44	Slide Switch Cover	TV07324	1				
	Cam B (DLV12,DLV16 type)	TV06846	1	45	Spring	TV06860	1				



Manufactured by:

NITTO KOHKI CO., LTD.

9-4, Nakaikagami 2-chome, Ohta-ku, Tokyo, 146-8555, Japan

Tel : +81-3-3755-1111

Fax : +81-3-3753-8791