

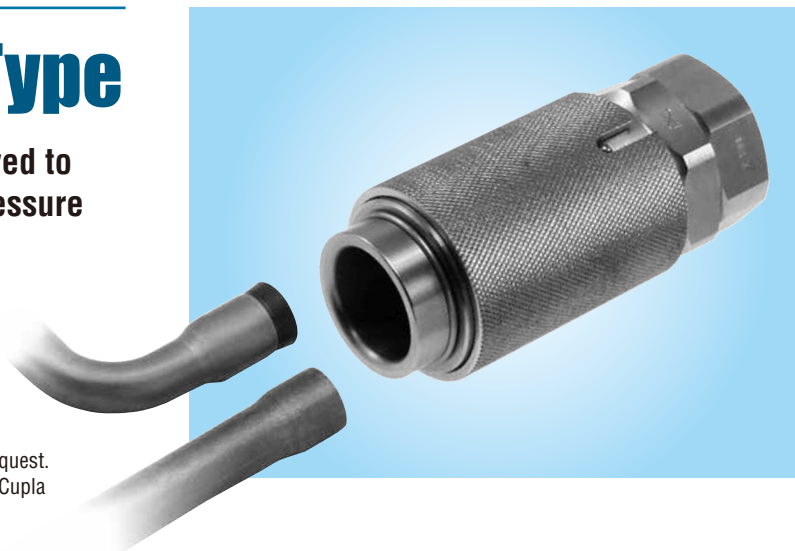
Chuck Lock System for Expanded Pipes and Bulged Pipes

Pipe Cupla PCHS Type

A special chuck lock system is employed to reduce lock scratches and improve pressure resistance.

Suits for high pressure use.

- Simply push pipes into the Pipe Cupla for connection.
- Locking the outer surface of pipe with the special collet chuck reduces lock scratches and improves pressure resistance.
- A model with sleeve stopper mechanism is also available on request. It prevents accidental disconnection after connecting the Pipe Cupla to pipes.



Applications

Charging Work
Pressure Resistance Test
Leak Test

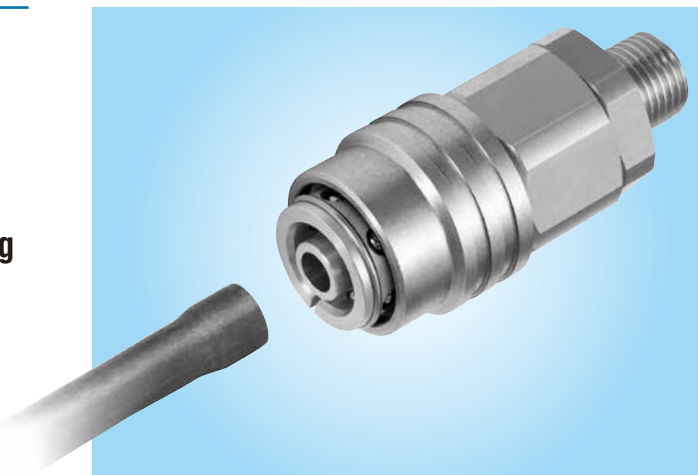
For Expanded Pipes

Pipe Cupla PCB Type

Suits for connection and disconnection with expanded pipes and spool pipes.

Easy to handle with the ball lock system using sleeve operation.

- Connects directly to pipes.
- Employs a ball lock system to grip on the outer surface of pipe.
- A model equipped with automatic shut-off valve or sleeve lock mechanism to prevent accidental disconnection is available on request.



Applications

Charging Work
Pressure Resistance Test
Leak Test
Vacuum Suction Test

For Bulged Pipes and Spool Pipes

Pipe Cupla PCBW Type

Suits for connection and disconnection with bulged pipes and spool pipes.

Resistance to bending forces and vibration is increased by employing a double-row ball lock system.

- Simply push pipes into the Pipe Cupla for connection.
- Employs a double-row ball lock system to grip on the outer surface of pipe securely and to increase resistance to bending forces and vibration.
- A model equipped with automatic shut-off valve or sleeve lock mechanism to prevent accidental disconnection is available on request.

Applications

Charging Work
Pressure Resistance Test
Leak Test



For Bulged Pipes and Spool Pipes

Pipe Cupla PCP Type

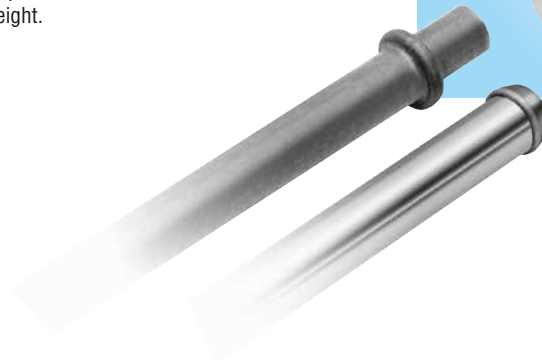
Employs a plastic chuck that scarcely scratches pipes.

Great workability with lighter weight.

- Simply push pipes into the Pipe Cupla for connection.
- A plastic chuck scarcely scratches pipes.
- Improves workability with lighter weight.

Applications

Charging Work
Pressure Resistance Test
Leak Test



For Straight Pipes

Pipe Cupla PCBL Type

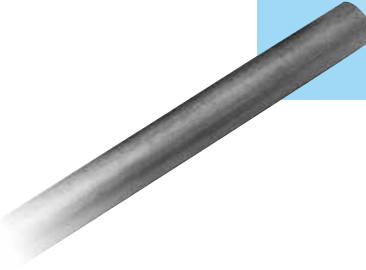
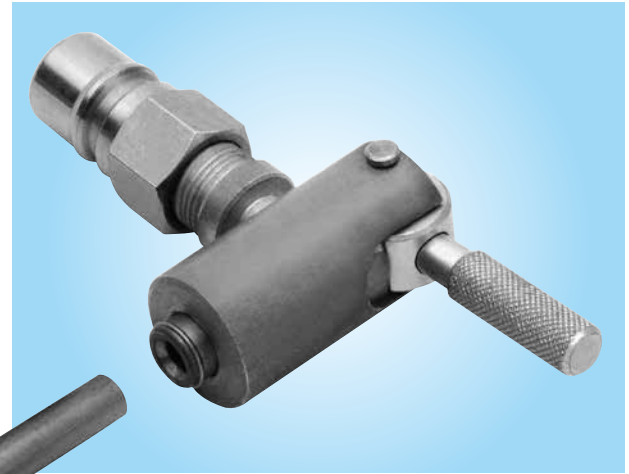
Suits for connection and disconnection with straight pipes.

Employs a ball lock system to grip on the outer surface of pipe. Improved connection and disconnection with lever operation.

- Connects directly to straight pipes.
- A ball lock system grips on the outer surface of pipe.
- Employs a lever operation system for easy connection and disconnection.
- Employs an aluminum body to lighten the weight and to improve workability.
- Particularly suitable for refrigerator assembly lines.

Applications

- Charging Work
- Pressure Resistance Test
- Leak Test
- Vacuum Suction Test



For Straight Pipes

Pipe Cupla PCLB Type

Suits for connection and disconnection with straight pipes.

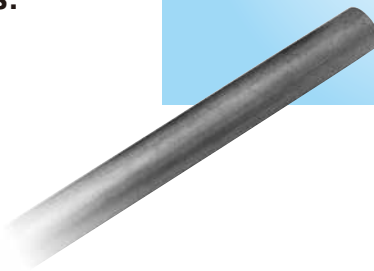
Employs a ball lock system to grip on the outer surface of pipe.

One-handed lever operation facilitates easy connection and disconnection with pipes.

- Connects directly to straight pipes.
- A ball lock system grips on the outer surface of pipe.

Applications

- Charging Work
- Pressure Resistance Test
- Leak Test



For Straight Pipes

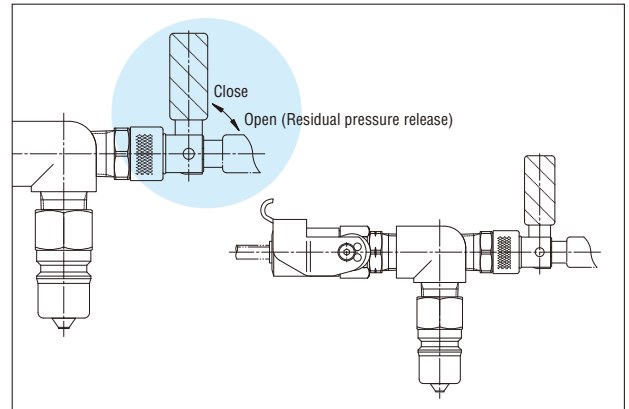
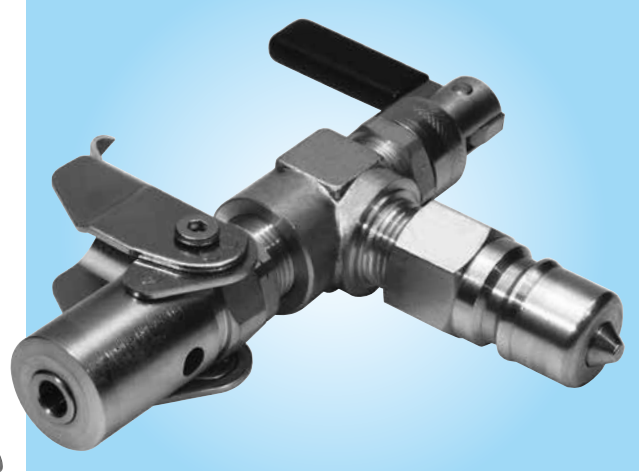
PCV Type Cupla with Residual Pressure Release Device

Equipped with the residual pressure release device. Lever operation releases the residual pressure for easy disconnection.

- Made up of PCV Type Cupla and the residual pressure release device.
- Raising the lever of the residual pressure release device releases the residual pressure for easy pipe disconnection.
- Suits for refrigerants that require high pressure.

Applications

- Charging Work
- Pressure Resistance Test
- Leak Test



For Pipes with Fittings

Pipe Cupla PCB Type

Suits for connection and disconnection with pipe fittings. A ball lock system grips on the rear of the hex. nut of pipe fitting upon connection.

- Connects directly to pipe fittings.
- Simply push pipes into the Pipe Cupla for connection. The balls in the Pipe Cupla grip on the rear of the hex. nut of pipe fitting upon connection.

Applications

- Charging Work
- Pressure Resistance Test
- Leak Test



For Straight Pipes and Pipes with Blind Rubber Plugs

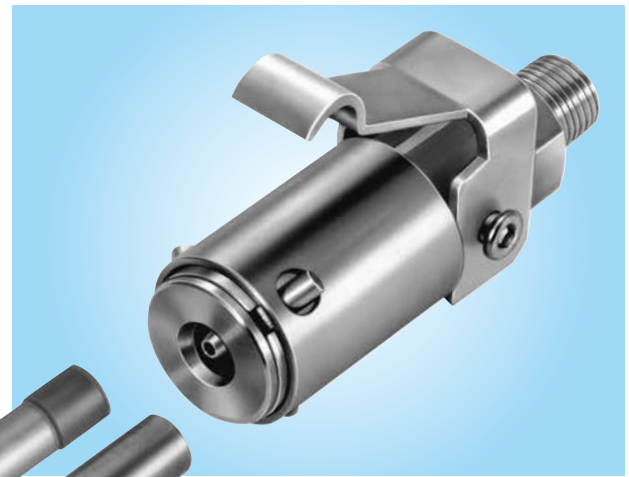
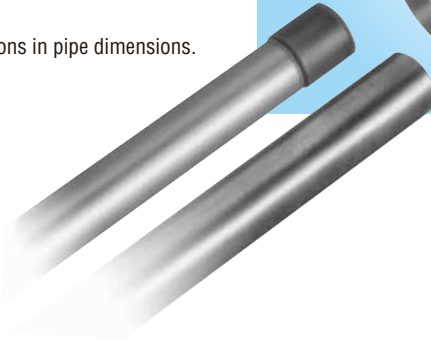
Pipe Cupla PCW Type

Suits for connection and disconnection with straight pipes and pipes with blind rubber plugs. Frequent connection and disconnection can be easily made with the unique lever operation.

- Connects directly to pipes.
- Unique lock design on pipes allows some slight variations in pipe dimensions.

Applications

Charging Work
Pressure Resistance Test
Leak Test



For Large Diameter Straight Pipes

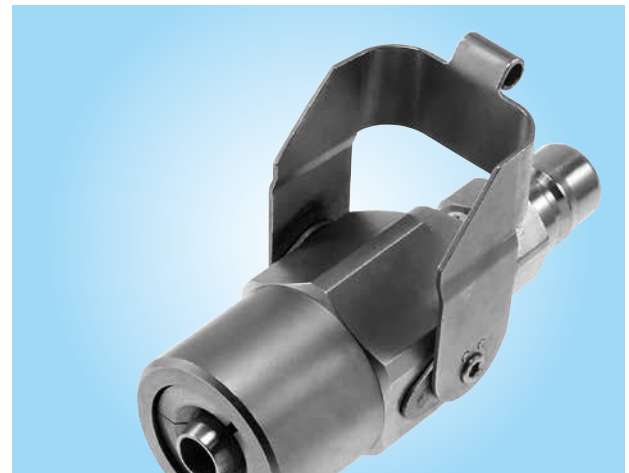
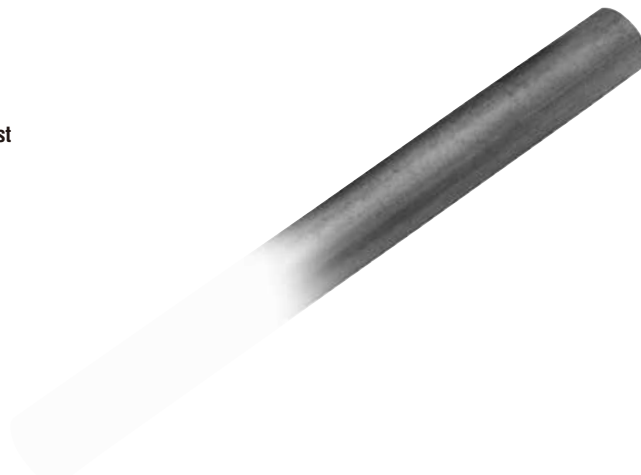
Pipe Cupla PCA Type

Suits for connection and disconnection with large diameter straight pipes. Employs a special chuck lock system. High pressure resistant version is also available on request.

- Connects directly to large diameter straight pipes.
- Employs a special chuck lock system to grip on the outer surface of pipe.

Applications

Charging Work
Pressure Resistance Test
Leak Test
Vacuum Suction Test



For Special Pipes

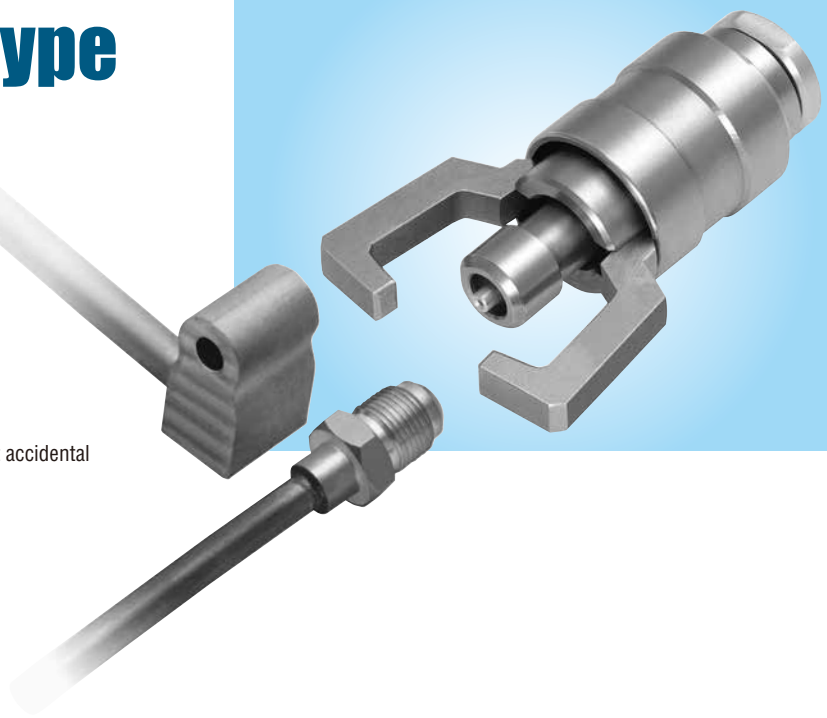
Pipe Cupla PCD Type

Simply push the Pipe Cupla onto pipe fittings.
Unique locking mechanism provides outstanding pressure resistance and air-tightness.

- Applicable to pipes with a wide variety of fittings.
- A special clamp locks the outer surface of pipe.
- A model equipped with sleeve lock mechanism to prevent accidental disconnection is available on request.

Applications

Charging work
Pressure Resistance Test
Leak Test
Vacuum Suction Test



High Pressure Type for Spool Pipes

Pipe Cupla PCH Type

Suits for connection and disconnection with spool pipes.
A special chuck lock system reduces lock scratches and improves pressure resistance.

- Simply push spool pipes into the Pipe Cupla for connection.
- A special chuck lock system is employed to reduce lock scratches and improve pressure resistance.
- A model equipped with sleeve lock mechanism to prevent accidental disconnection is available on request.

Applications

Charging Work
Pressure Resistance Test
Leak Test



Screw-in Type Cupla

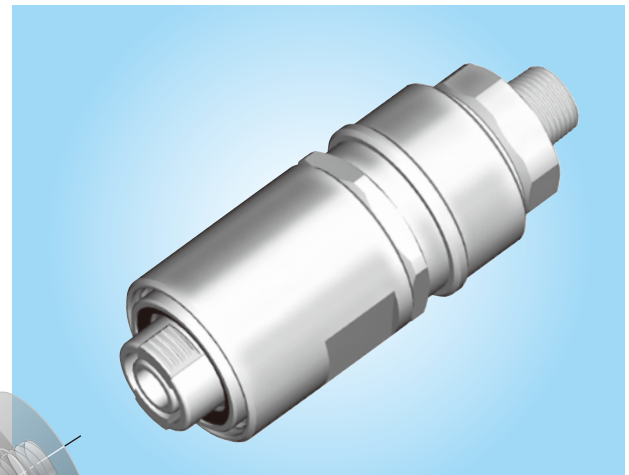
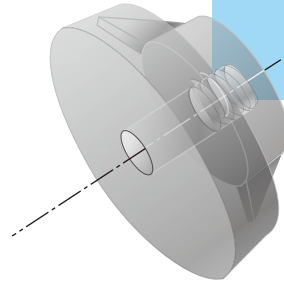
Screw Cupla PCSI Type

By pushing the Screw Cupla direct to the female thread for connection improves operating efficiency.

- Connects directly to the female thread.
- Simply push the Screw Cupla into the female thread. The safety design ensures an instant and secure grip on the thread with the locking claws upon connection.
- Time-consuming screw tightening work is eliminated, resulting in reduced connection time.

Applications

Charging Work
Pressure Resistance Test
Leak Test



For Locking at the Leading End of Workpiece from the Inside

Pipe Cupla PCBI Type

Employs balls to lock at the leading end of workpiece from the inside. Greatly improves workability.

- Simply push the back end of the Pipe Cupla toward the workpiece for connection. The balls in the Pipe Cupla lock at the leading end of the workpiece from the inside upon connection.
- Internal pressure is utilized to enhance the sealing performance between the Pipe Cupla and workpiece.
- Time-consuming connection work is eliminated.

Applications

Charging Work
Pressure Resistance Test
Leak Test



For Locking at the Leading End of Workpiece from the Inside

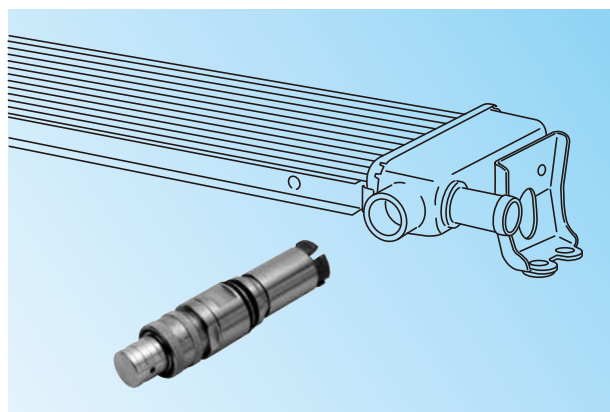
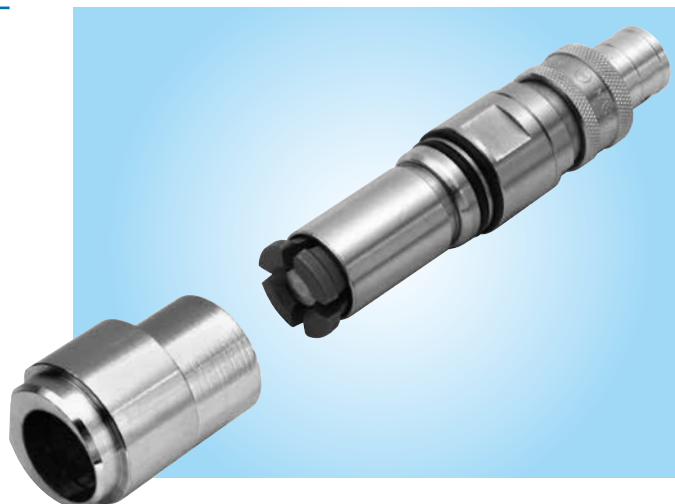
Pipe Cupla **PCI** Type

**Employs chucks to lock at the leading end of workpiece from the inside.
Greatly improves workability.**

- Simply push the back end of the Pipe Cupla toward the workpiece for connection. The chucks in the Pipe Cupla securely lock at the leading end of the workpiece from the inside upon connection.
- Internal pressure is utilized to enhance the sealing performance between the Pipe Cupla and workpiece.
- Time-consuming connection work is eliminated.

Applications

Charging Work
Pressure Resistance Test
Leak Test



For Pipe Inner Wall Lock

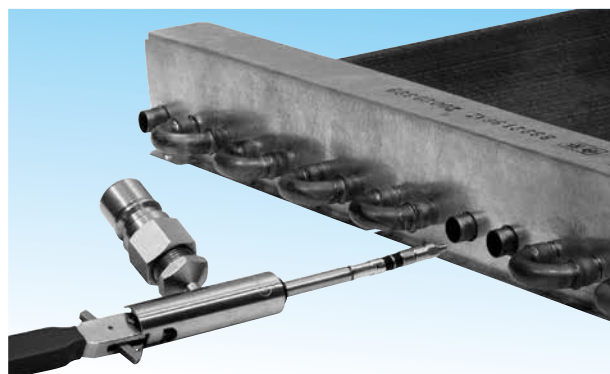
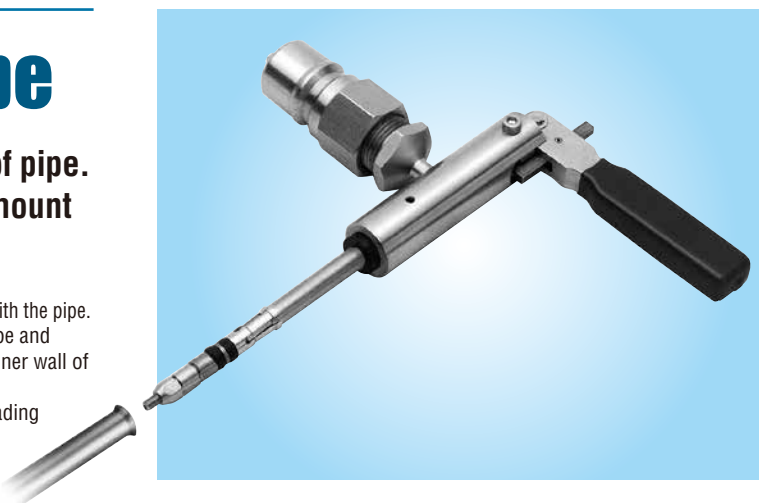
Pipe Cupla **PCIF** Type

**Employs chucks to grip on the inner wall of pipe.
Suitable for applications with a small amount of clearance.**

- Moving the lever of the Pipe Cupla horizontally completes connection with the pipe.
- Pushing the rod shaped part of the Pipe Cupla into the inside of pipe and moving the lever horizontally activates the chucks to grip on the inner wall of pipe securely.
- Lever operation seals the fluid passage at the inner wall and the leading end of pipe.
- Time-consuming connection work is eliminated.

Applications

Charging Work
Pressure Resistance Test
Leak Test
Vacuum Suction Test



A PCIF type shown below is available on request.



For Automatic Pipe Disconnection

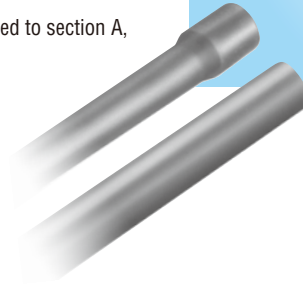
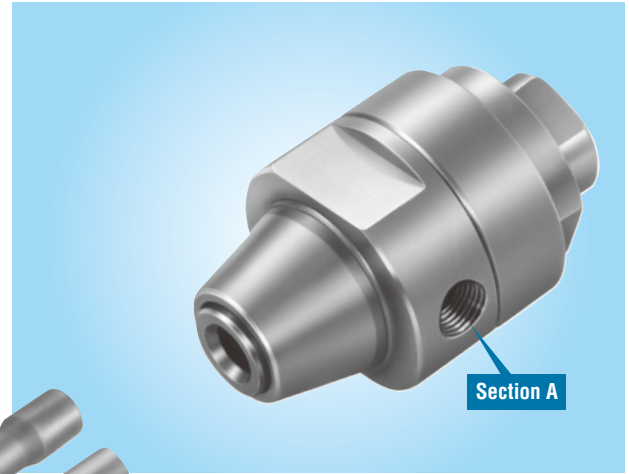
AUTO Cupla **APCB** Type

Automatic Pipe Disconnection Type.
Contributes to energy and labor saving on the production line.

- Simply push pipes into the Auto Cupla for connection.
- Air-driven mechanism is employed in the Auto Cupla to disconnect the pipe automatically.
 When an air pressure of 0.5 to 0.6 MPa (5 to 6 kgf/cm²) is applied to section A, the pipe is automatically disconnected.

Applications

- Charging Work
- Pressure Resistance Test
- Leak Test



For Refrigerant Charge Valves Used in Car Air conditioner Production Lines

PCB Type Cupla for Charge Valves

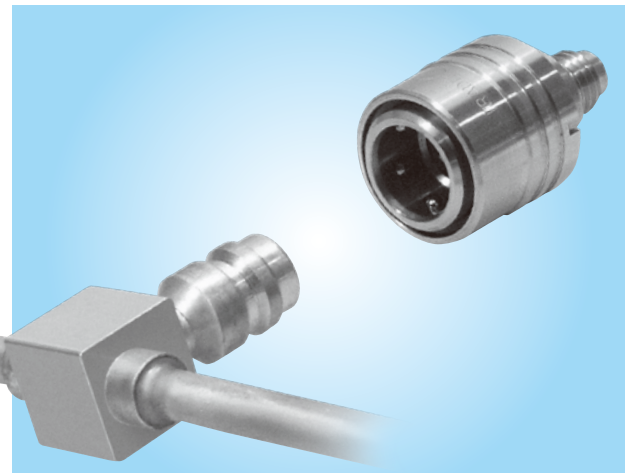
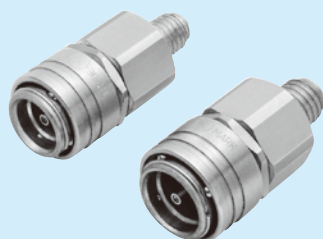
Quick connection and disconnection with refrigerant charge valves (JRA2009 standard) used in car air conditioner production lines.

- Greatly improve workability in charging refrigerants and vacuum suction.

Applications

- Charging Work
- Pressure Resistance Test
- Leak Test
- Vacuum Suction Test

Valve built-in types are also available on request.



For high pressure use

For low pressure use

