

Quick Connect Couplings

Nitto Kohki offers high-quality,
one-of-a-kind quick connect couplings for various applications





MICRO CUPLA

Features

- ✓ Quick push-to connect design
- ✓ Outer sleeve is only 3/8" wide, ideal for piping in space-limited area
- ✓ Plated brass and Stainless bodies for excellent corrosion resistance
- ✓ Available in various configurations

Valve structure



One-way shut-off

Applicable fluids



Air

Water
(Tube Fitter type is unsuitable for water.)

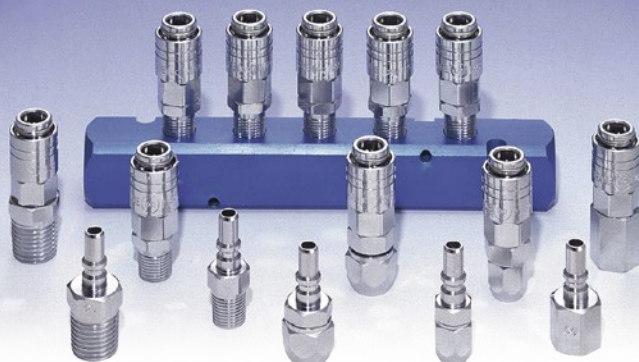
Body Material	Brass, Stainless Steel
Working Pressure	145 PSI
Vacuum Suitability	400 mmHg
Seal Material	NBR



Configurations

Tube Barb	3 mm ID, 4 mm ID	
Male Thread	M5, BSPT 1/8", 12-32UNF	
Tube Fitting	4 mm OD, 6 mm OD Panel Mount Type	

Pre-assembled Manifolds (BSPT 1/8" x 2 ports sideways)



SMALL CUPLA

Features

- ✓ Quick push-to connect design
- ✓ Outer sleeve is only 9/16" wide, suitable for piping in space-limited area
- ✓ 2-3 time wider flow path compared with MICRO CUPLA series
- ✓ Plated brass bodies for excellent corrosion resistance

Valve structure



One-way shut-off

Applicable fluids



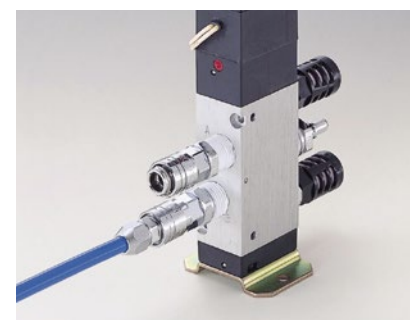
Air

Water
(Tube Fitter type is unsuitable for water.)

Body material	Brass
Working Pressure	145 PSI
Vacuum Suitability	400 mmHg
Seal Material	NBR

Configurations

Hose Connection	4 mm ID x 6 mm OD, 4.5 mm ID x 6 mm OD	
Male Thread	BSPT 1/8", BSPT 1/4"	
Female Thread	BSPT 1/8"	
Tube Fitting	6 mm OD Tube 8 mm OD Tube Panel Mount Type Available	

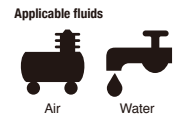


Pre-assembled Manifolds (BSPT 1/4" x 2 ports sideways)





▲Blue ▲Green ▲Ivory ▲Pink ▲Yellow



Body Material	Polyacetal Resin (POM)
Working Pressure	145 PSI
Vacuum Suitability	400 mmHg
Seal Material	NBR

CUBE CUPLA

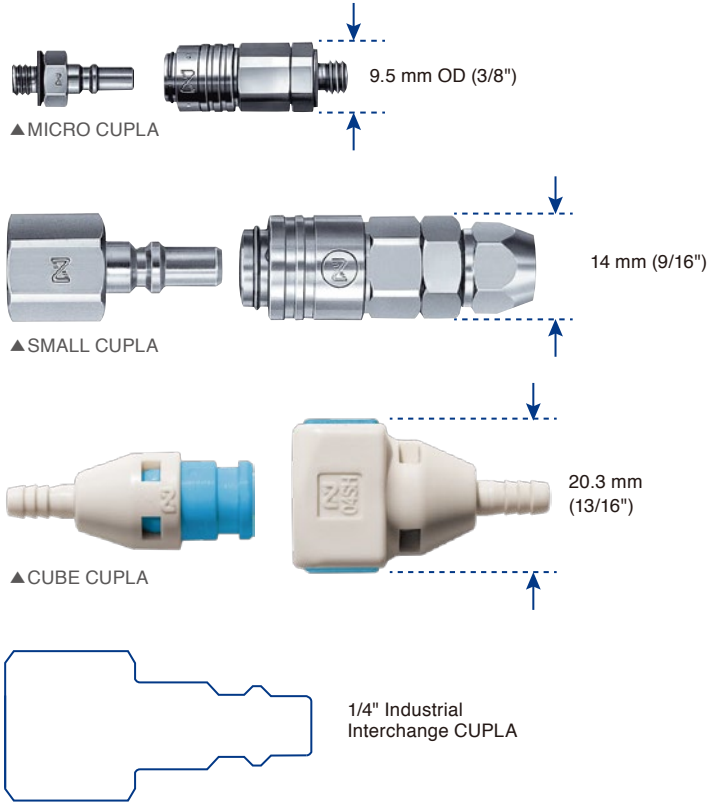
Features

- ✓ Ultra-lightweight plastic body
- ✓ Quick push-to-connect design
- ✓ Ergonomic 2 way release-button design, preventing accidental disconnection
- ✓ Available in 5 different colors for flow line identification
- ✓ Available in various configurations and valving options

Configurations

Hose Barb	4 mm ID, 6 mm ID Panel Mount Type Available	
Male Thread	BSPT 1/8"	

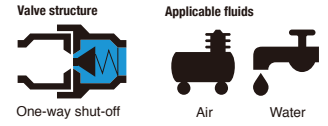
Size Comparison (Full Scale)



CUPLA will not be released unless both sides' buttons are pressed at the same time to prevent accidental disconnection

Light weight (10 grams in combination) is suitable for installation to portable devices

5 color variations provide the operators with clear identification of each line for error proof



Body Material	Engineering Plastics (PBT, POM)
Working Pressure	218 PSI (145 PSI for branch type)
Vacuum Suitability	400 mmHg
Seal Material	NBR

HI CUPLA ACE

Features

- ✓ Combines the advantage of plastic material with excellent performance of our metal CUPLA for industrial use.
- ✓ Easy and quick push-to-connect design
- ✓ The weight is only 25% of our steel CUPLA, improving maneuverability while reducing the chance of damaging surrounding vulnerable goods
- ✓ Sleeve lock function to avoid accidental disconnection
- ✓ Plastic body material is suitable for water line, outdoor application
- ✓ Hose protector type provides hose with greater durability against bending

Configurations

Hose Barb	1/4", 3/8"		
Male Thread	BSPT 1/4", 3/8"		
Hose Adapter	5 mm ID x 8 mm OD, 6 mm ID x 9 mm OD, 6.5 mm ID x 10 mm OD, 8 mm ID x 12mm OD, 8.5 mm ID x 12.5 mm OD		
Female Thread	Parallel (G) 1/4"		
Hose with protector	5 mm ID x 8 mm OD, 6.5 mm ID x 10 mm OD, 8.5 mm ID x 12.5 mm OD		

Branch Type

Socket ports x 2, Plug port x 1



Valve structure

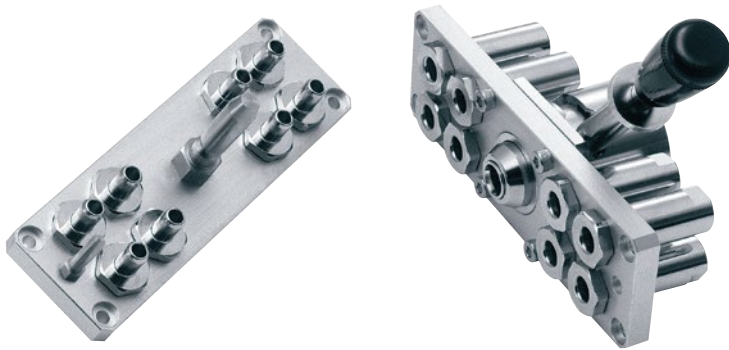


One-way shut-off

Applicable fluids



Air



Body Material	CUPLA : Brass Plate : Aluminum Alloy (4,8,12 ports) Steel (16 ports)
Working Pressure	102 PSI
Vacuum Suitability	N/A
Seal Material	NBR

MULTI CUPLA MAM Type

Features

- ✓ Simple lever operation provides quick and secure connection of multiple lines
- ✓ Robust metal construction for tough application
- ✓ Precision guide shaft and ball locking mechanism provides user-friendly smooth operation
- ✓ 3 stage lever operation system provides operators with safety, avoiding unintended disconnection

Port Number Options

Female BSPT 1/8" x 4, 8, 12, 16 ports



▲ 4 port



▲ 8 port

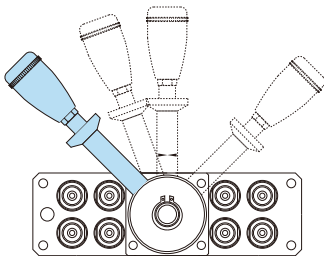


▲ 12 port

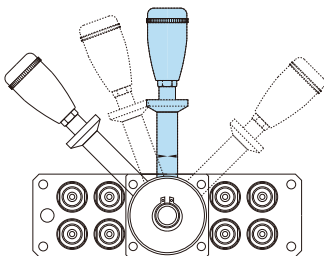


▲ 16 port

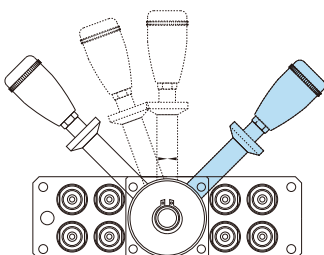
Lever Operation



Release Position

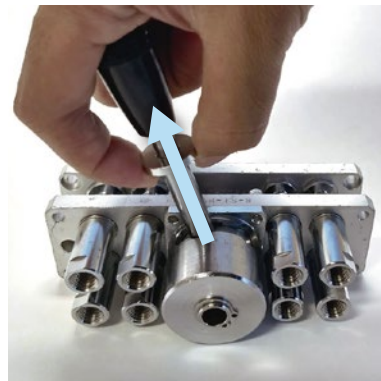


Parking Position
Valve : Closed
Lock : Engaged

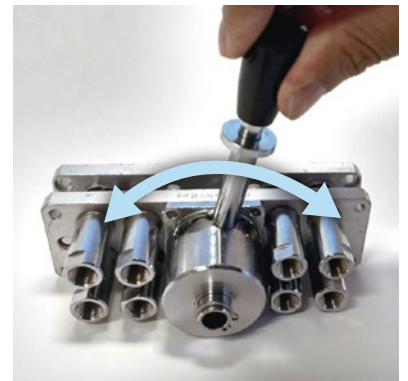


Flow Position
Valve : Open
Lock : Engaged

Sleeve Locking System

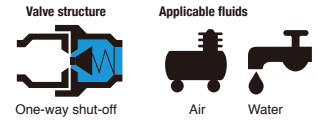


1. Pull handle sleeve



2. Shift Lever





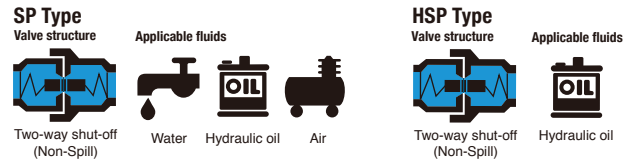
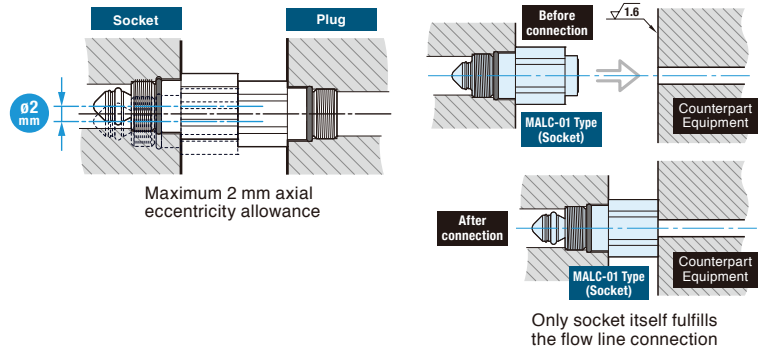
Body Material	Brass (Nickel Plated)
Working Pressure	145 PSI
Vacuum Suitability	N/A
Seal Material	NBR

MULTI CUPLA MALC-01 Type

Features

- ✓ Face seal CUPLA suitable for custom modular design of air and water line connection system
- ✓ Easy-to-install design allowing as wide as 2mm axial eccentricity to secure maximum flow path
- ✓ Only socket unit itself fulfills flow line connection when used against flat surface, making it flexible for custom system design

Configurations



Body Material	SP Type : Stainless Steel HSP Type : Special Steel
Working Pressure	SP Type : 290-218 PSI HSP Type : 1160 PSI
Vacuum Suitability	N/A
Seal Material	FKM

MULTI CUPLA MALC-SP/HSP Type

Features

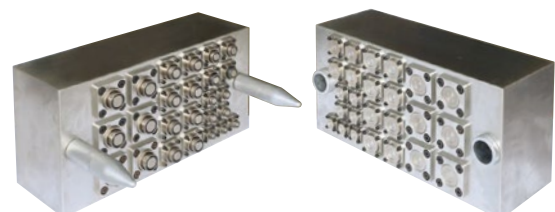
- ✓ FLAT FACE CUPLA suitable for custom modular design of water & hydraulic line connection system
- ✓ Both spill per disconnection and air admixture per connections are reduced to minimum level (see charts below)
- ✓ Easy-to-install design allowing a 2 mm axial eccentricity to secure maximum flow path
- ✓ Wide flow path allows maximize the connection system efficiency

Configurations



Spill Per Disconnection / Air Admixture Per Connection

Size	1/8"	1/4"	3/8"	1/2"	3/4"	1"	1-1/2"
(mL)	0.08	0.14	0.26	0.55	0.95	0.85	1.46



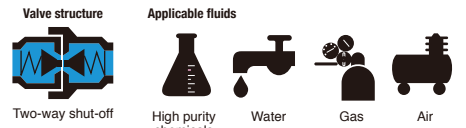


SEMICON CUPLA SP Type

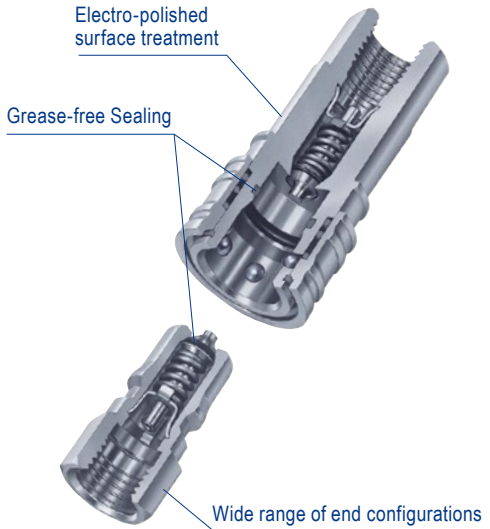
Features

- ✓ Grease-free design to eliminate the risk of fluid contamination
- ✓ Body surface is electro-polished for enhanced corrosion resistance
- ✓ Cleaned, assembled, inspected and packed in a clean room
- ✓ 4 choices of seal material available to suit your fluid and application

Female Thread	1/8" BSPT, 1/8" NPT, 1/8" UNS, 1/4" BSPT, 1/4" NPT, 1/4" UNS, 3/8" BSPT, 1/2" BSPT, 3/4" BSPT, 1" BSPT	
---------------	--	--



Body Material	Electro-polished Stainless Steel (SUS304, SUS 316)
Working Pressure	29 PSI
Seal Material	FKM, EPDM, Perfluoroelastomer, Kalrez

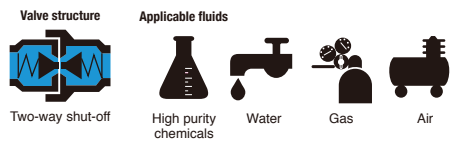


SEMICON CUPLA SCT Type

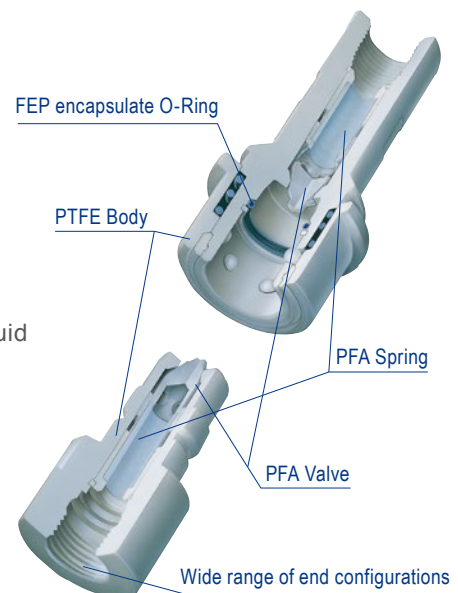
Features

- ✓ Grease-free design to eliminate the risk of fluid contamination
- ✓ PTFE body provides excellent resistance to chemicals
- ✓ No metal parts contacts with liquid so it will not dissolve metal ions into the fluid
- ✓ Optional keyway lock available to prevent incorrect connection
- ✓ Cleaned, assembled, inspected and packed in a clean room

Female Thread	1/4" BSPT, 1/4" NPT, 3/8" BSPT, 3/8" NPT 1/2" BSPT, 1/2" NPT, 3/4" BSPT, 3/4" NPT, 1" BSPT, 1" NPT	
---------------	--	--



Body Material	PTFE
Working Pressure	29 PSI
Seal Material	FEP-covered Fluoro rubber



Nitto Kohki's Standard CUPLA series



Nitto Kohki offers wide variety of CUPLA series for various applications. Our expertise ensures the highest in quality available in the market.

HIGH QUALITY INDUSTRIAL AIR CUPLA



LEAK-FREE, HIGH-FLOW WATER AND HYDRAULIC CUPLA



CORROSION-FREE PFA, PTFE CUPLA



WIDE VARIETY OF MULTI-LINE CONNECTION SYSTEM



Nitto Kohki's Other Product Lines

ELECTRIC & HYDRAULIC MACHINE TOOLS, PNEUMATIC POWER TOOLS



HIGH-PRECISION TORQUE-CONTROL ELECTRIC SCREWDRIVERS



HIGH QUALITY AIR COMPRESSORS AND VACUUM PUMPS



Visit
www.nittokohki.com
for more information !

NITTO KOHKI U.S.A., INC.

46 Chancellor Drive, Roselle, Illinois 60172, U.S.A.
Phone: +1-630-924-9393 / +1-630-924-8811
info@nittokohki.com
CUPLA : quickconnects@nittokohki.com
Tools and delvo : info@nittokohki.com
Pumps : info-pumps@nittokohki.com



[trademark (CUPLA)] is registered in the United States.