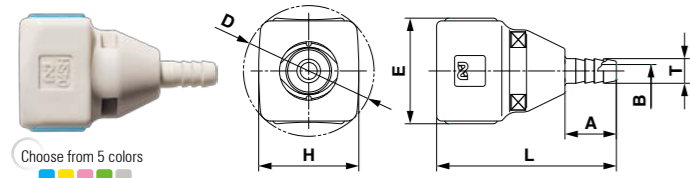
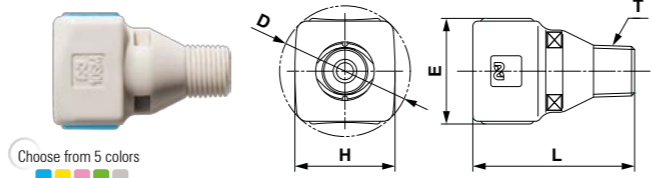


Socket SH Type (Hose barb)



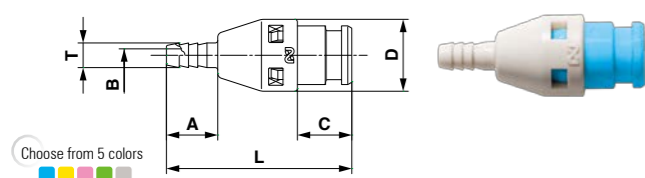
Model*	Application (Tube)	Built-in valve	Mass (g)	Dimensions (mm)						
				L	A	E	oT	oB	H	oD
SPC-04SH	4 mm ID	With	6.5	35	10	(20.3)	4.8	2.5	19.5	(25.5)
SPC-04SH-VL	4 mm ID	Without	6.1	35	10	(20.3)	4.8	2.5	19.5	(25.5)
SPC-06SH	6 mm ID	With	7.0	40	15	(20.3)	7	3.6	19.5	(25.5)
SPC-06SH-VL	6 mm ID	Without	6.6	40	15	(20.3)	7	3.6	19.5	(25.5)

Socket SM Type (Male thread)



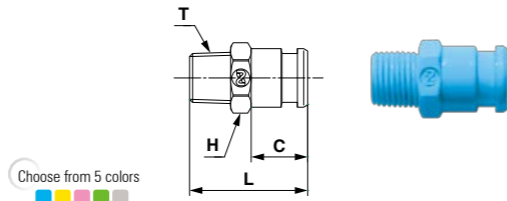
Model*	Application	Built-in valve	Mass (g)	Dimensions (mm)					
				L	E	T	H	oD	
SPC-10SM	Rc 1/8	With	6.8	31.5	(20.3)	R 1/8	19.5	(25.5)	
SPC-10SM-VL	Rc 1/8	Without	6.4	31.5	(20.3)	R 1/8	19.5	(25.5)	

Plug PH Type (Hose barb)



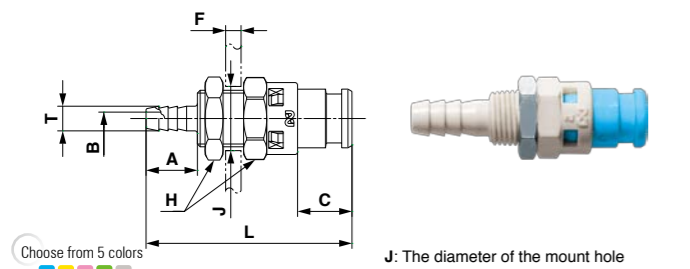
Model*	Application (Tube)	Built-in valve	Mass (g)	Dimensions (mm)					
				L	A	C	oT	oB	
SPC-04PH	4 mm ID	With	3.1	(36)	10	(10.5)	14	4.8	2.5
SPC-04PH-VL	4 mm ID	Without	2.6	(36)	10	(10.5)	14	4.8	2.5
SPC-06PH	6 mm ID	With	3.4	(40)	15	(10.5)	14	7	3.6
SPC-06PH-VL	6 mm ID	Without	2.9	(40)	15	(10.5)	14	7	3.6

Plug PM Type (Male thread)



Model*	Application	Built-in valve	Mass (g)	Dimensions (mm)			
				L	C	H (WAF)	T
SPC-10PM	Rc 1/8	With	2.0	23	11	Hex.12	R 1/8
SPC-10PM-VL	Rc 1/8	Without	1.5	23	11	Hex.12	R 1/8

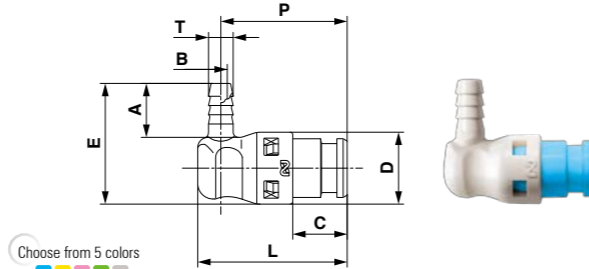
Plug PHB Type (For panel mount)



Model*	Application (Tube)	Built-in valve	Mass (g)	Dimensions (mm)							
				L	A	C	H (WAF)	oT	oB	oJ	
SPC-04PHB	4 mm ID	With	5.9	(40)	10	(10.5)	Hex.14	4.8	2.5	11.1 <sup>+0.3</sup>	
SPC-04PHB-VL	4 mm ID	Without	5.4	(40)	10	(10.5)	Hex.14	4.8	2.5	11.1 <sup>+0.3</sup>	
SPC-06PHB	6 mm ID	With	6.2	(45)	15	(10.5)	Hex.14	7	3.6	11.1 <sup>+0.3</sup>	
SPC-06PHB-VL	6 mm ID	Without	5.7	(45)	15	(10.5)	Hex.14	7	3.6	11.1 <sup>+0.3</sup>	

J: The diameter of the mount hole  
F: Thickness of panel must be 5 mm or less.

Plug PHL Type (Hose barb)



Model*	Application (Tube)	Built-in valve	Mass (g)	Dimensions (mm)							
				L	C	P	oD	A	E	oT	oB
SPC-04PHL	4 mm ID	With	3.5	(29)	(10.5)	(24.5)	14	10.5	23.5	4.8	2.5
SPC-04PHL-VL	4 mm ID	Without	3	(29)	(10.5)	(24.5)	14	10.5	23.5	4.8	2.5
SPC-06PHL	6 mm ID	With	3.9	(30.5)	(10.5)	(25.5)	14	15.5	28.5	7	4
SPC-06PHL-VL	6 mm ID	Without	3.4	(30.5)	(10.5)	(25.5)	14	15.5	28.5	7	4

\* For each color, the model name ends with; Blue: -BLU Yellow: -YEL Pink: -PNK Green: -GRN Ivory: -IVR (Example/SM type Blue: SPC-10SM-BLU)

**▲ Safety Guide**

Read without fail and observe the following pages in the general Quick Connect Couplings Catalog; [Cube Cupla] page, [Precautions Relating to the Use of All Cuplas] page, "Cuplas for Low Pressure (Air)" and "Cupla for Low Pressure (Water, Liquid) and for Medium Pressure" in the [Safety Guide] page.

Resin (POM) such as the main body ... Conforms to article No.3-D-2-(2)-2 and has passed both material and elution tests specified in the Food sanitation Act and the standards For Food and Food additives (Notice No. 370 of 1959 issued by the Ministry of Health and Welfare of Japan). O-ring (NBR) ... Conforms to article No.3-D-3-(1) and has passed both material and elution tests specified in the Food sanitation Act and the standards For Food and Food additives (Notice No. 370 of 1959 issued by the Ministry of Health and Welfare of Japan). Silicone type grease (NSF H1, NSF 61 registered product) is applied to the sealing material. The Cupla should be evaluated before use to determine the suitability with applications that require sanitation control.

Focused on you  
**NITTO KOHKI CO., LTD.**  
Web [www.nitto-kohki.co.jp/e](http://www.nitto-kohki.co.jp/e)

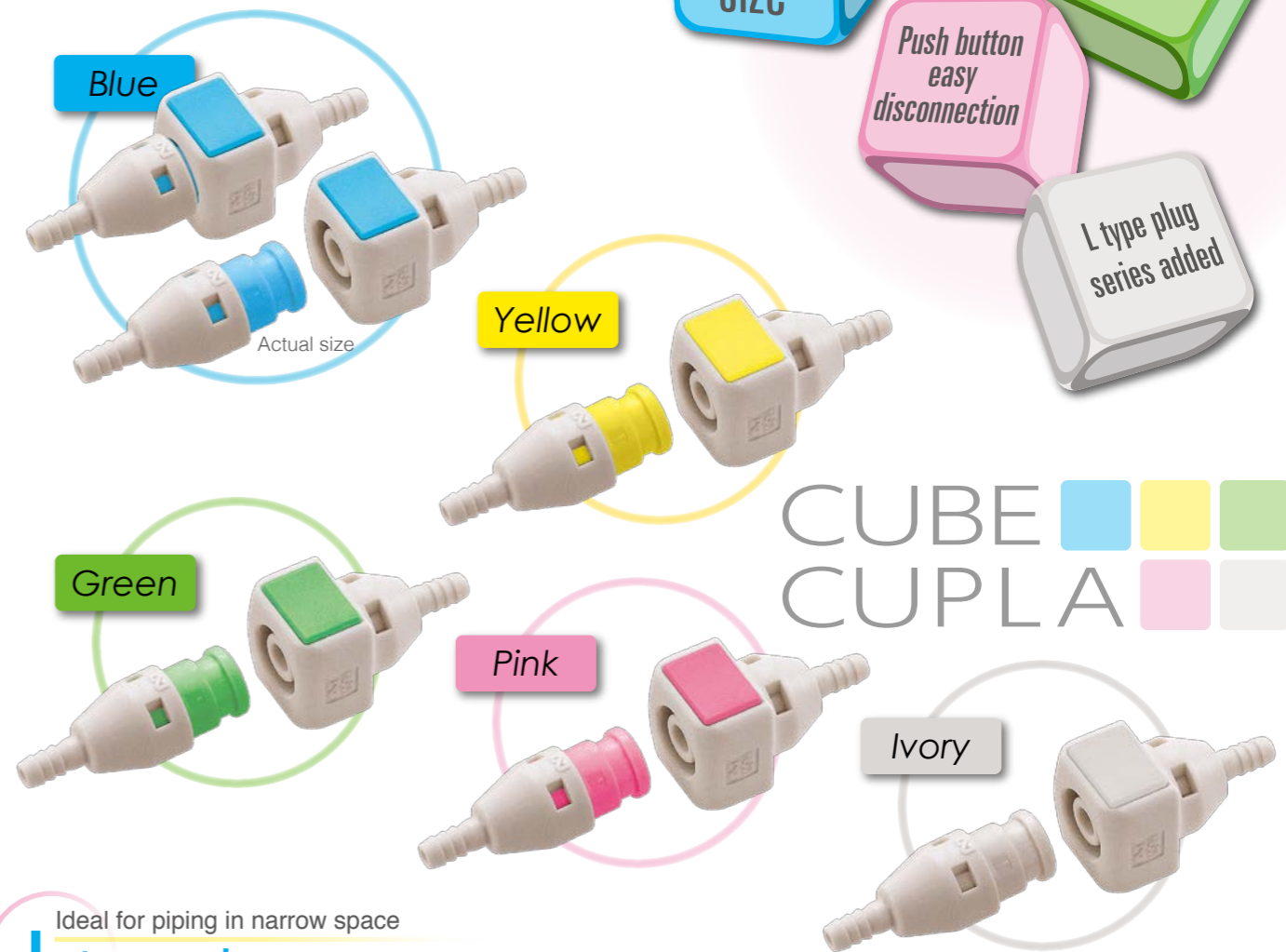
**Head Office**  
9-4, Nakaikigami 2-chome, Ohta-ku, Tokyo 146-8555, Japan  
Tel : +81-3-3755-1111 Fax : +81-3-3753-8791  
E-mail : [overseas@nitto-kohki.co.jp](mailto:overseas@nitto-kohki.co.jp)



DISTRIBUTED BY

New **CUBE CUPLA**

In all five color variations to prevent piping mistakes.



Ideal for piping in narrow space  
**L type plug**

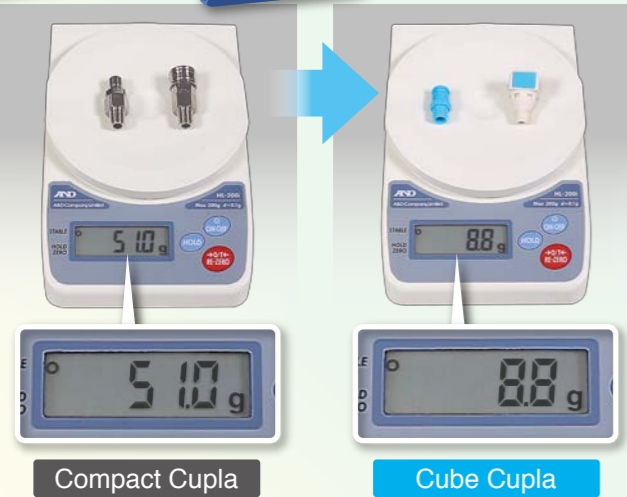


Material that conforms to the Food sanitation Act of Japan is adopted. The Cupla should be evaluated before use to determine the suitability with applications that require sanitation control.



**Small size**  
**Lightweight**  
**made of resin**

**Compared with products of the same specification**  
(Our products with similar working pressure / flow rate)



The weight is about ...

1/5

Compact Cupla

Cube Cupla

**Push-to-connect operation**

Push in

A clicking sound

**Push button easy disconnection**

Push button for disconnection  
2 places on the socket side

Just push the buttons

Push button easy disconnection

**5 colors**

**To prevent misconnection of piping**

Pipings that are difficult to identify

Connect without hesitation at a glance

?! (Confusion icon)

It is also possible to check colors after connection

**Application example**

Air piping of muscle compression machines for training

Ink piping and cooling water piping of commercial inkjet printers

For air piping of office automation equipment, measuring and analyzing fields, etc.

The above application is an example only. When adopting, please consult us separately.

Working pressure	Applicable fluids	Valve structure
1.0MPa {10kgf/cm <sup>2</sup> }	Air Water	Two-way shut-off One-way shut-off Straight through

**Specifications**

Body material	Polyacetal resin (POM)			
Size	4 mm and 6 mm ID tube, R 1/8			
Working pressure *1	1.0 MPa	10 kgf/cm <sup>2</sup>	10 bar	145 PSI
Seal material	Seal material	Mark	Working temperature range	Remarks
Working temperature range	Nitrile rubber	NBR (SG)	-20°C to +60°C	Standard material

Check the compatibility of the seal material with the type of fluid and temperature used in the application.  
\*1: The normal allowable fluid pressure under continuous use. Continuously exceeding the working pressure may cause leakage or damage.

**Max. Tightening Torque**

N·m {kgf·cm}

Size (Thread)	R 1/8
Torque	0.9 to 1.1 {9.2 to 11}

**Flow direction**

Fluid flow can be bi-directional when socket and plug are connected.



**Interchangeability**

Can be connected with plug and socket for Cube Cupla of the same type regardless of end configurations. However, built-in valve sockets cannot be connected with valveless plugs. The valve of the socket will not open and fluid will not flow.

**Min. Cross-Sectional Area** (-VL is a valveless type)

(mm<sup>2</sup>)

Model Plug / Socket	SPC-04SH	SPC-06SH	SPC-10SM	SPC-04SH-VL	SPC-06SH-VL	SPC-10SM-VL
SPC-04PH/PHB/PHL	5	5	5	5	5	5
SPC-06PH/PHB/PHL	5	8.6	8.6	5	8.6	8.6
SPC-10PM	5	8.6	8.6	5	8.6	8.6
SPC-04PH-VL/PHB-VL/PHL-VL	-	-	-	5	5	5
SPC-06PH-VL/PHB-VL	-	-	-	5	10.2	10.2
SPC-06PHL-VL	-	-	-	5	10.2	12.6
SPC-10PM-VL	-	-	-	5	10.2	16.6

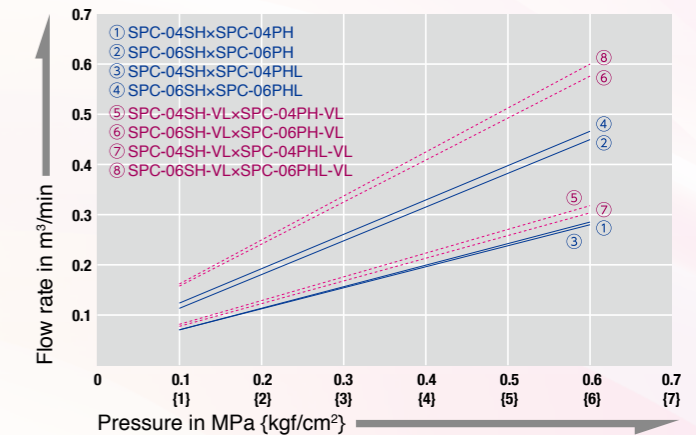
**Suitability for Vacuum**

53.0kPa {400mmHg}

Socket only	Plug only	When connected
-	-	Operational

**Pressure - Flow Characteristics** (The flow rate does not differ by each body color)

Test conditions  
-Fluid: Air -Temperature: Room temperature



**Select the combination of models suitable to your applications**

Combination capability		Plug	
		With	Without
Socket	Valve	Two-way shut-off	Not connectable
	Without	One-way shut-off	Straight through